

RADAR OBSERVATIONS IN THE CARIBBEAN

by

Tyrone Sutherland

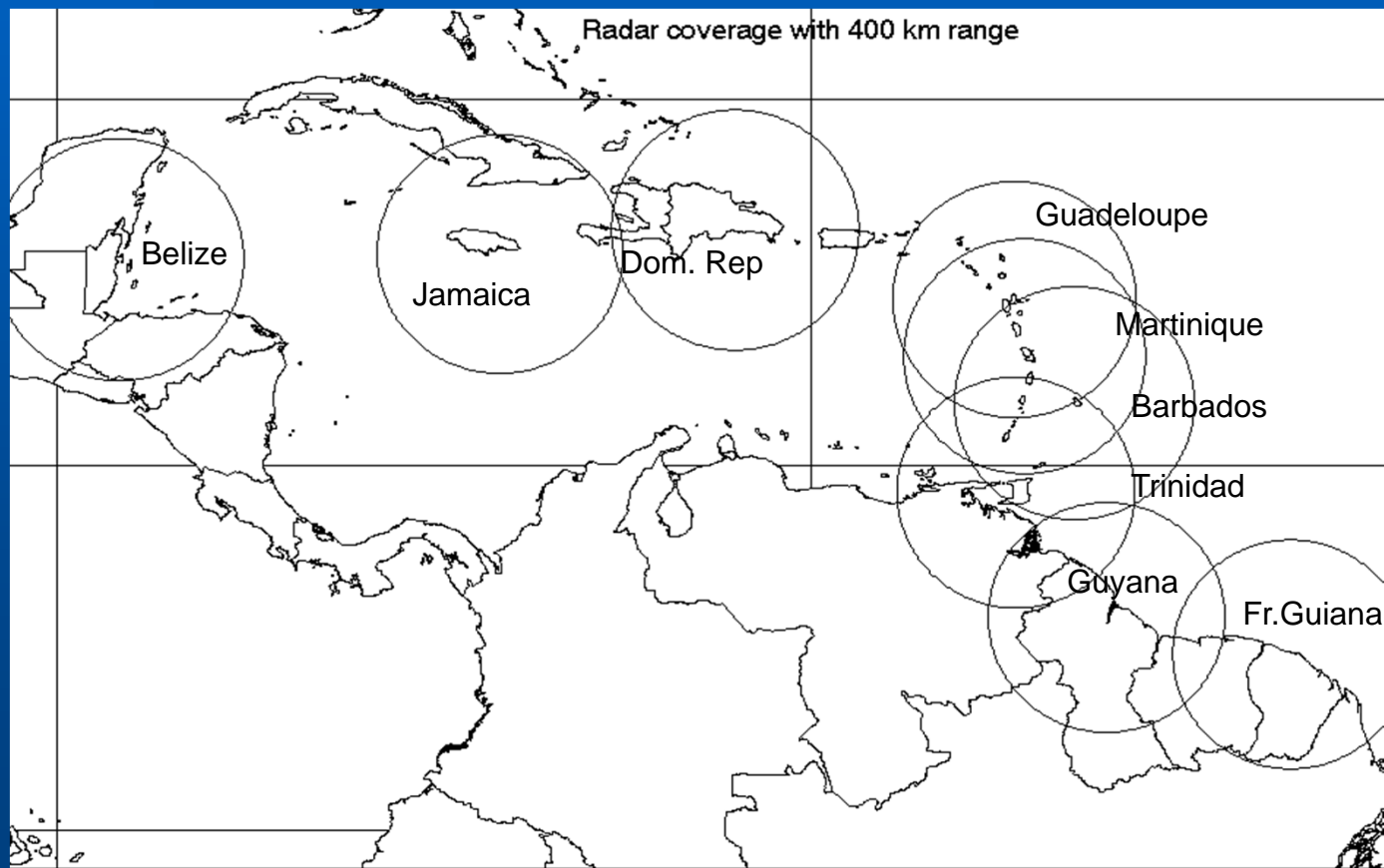
Caribbean Meteorological Organization

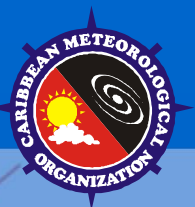




AN EXAMPLE OF A REGIONAL NETWORK

- Network with CMO, Météo-France & Partners

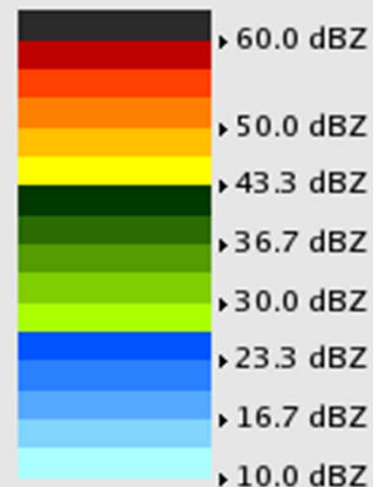




GUYANA RADAR

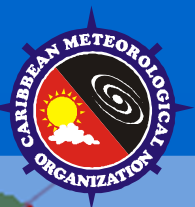


PPI (dBZ)
23:15 / 06-Mar-2011
Guyana



Pdf File: ppi_400km_0deg.ppi
Clutter Filter: Doppler Num 6
Time sampling:31
PRF: 375 Hz
Range: 400 km
Resolution: 1.600 km/pixel
Elevation: 0.0 deg
Data: Radar Data
National Weather Watch Centre
Rainbow® Gematronik

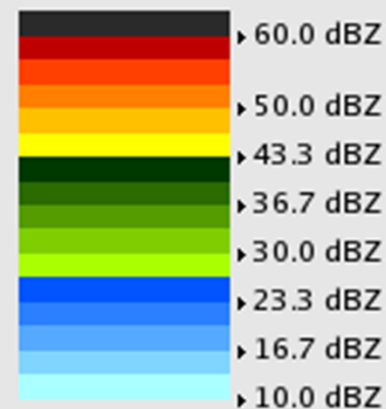




GUYANA RADAR



CAPPI (dBZ)
23:23 / 06-Mar-2011
Guyana

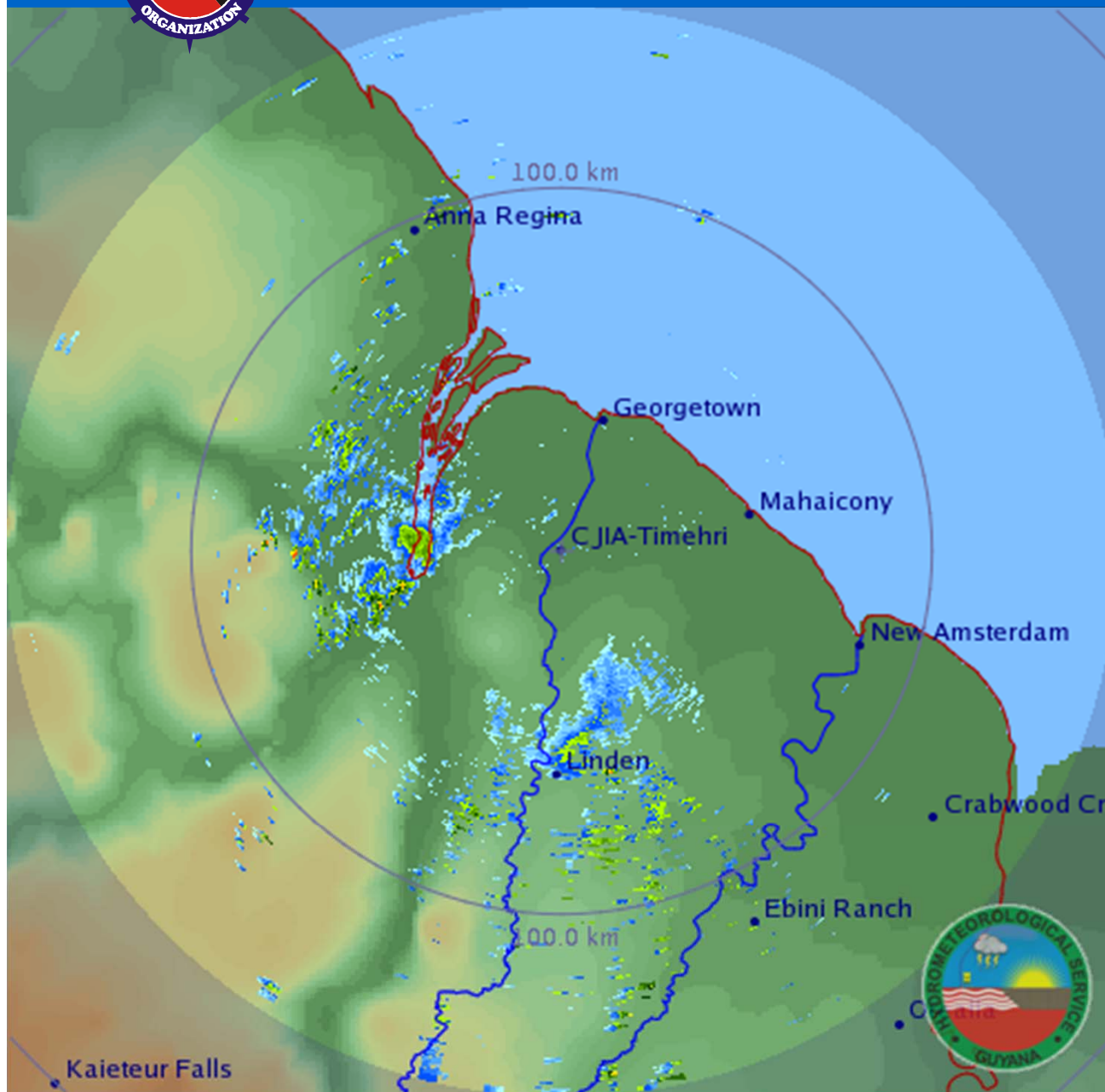


Pdf File: cappi_250km_1km.cappi
Clutter Filter: Doppler Num 6
Time sampling:33
PRF: 400 Hz
Range: 250 km
Resolution: 1.000 km/pixel
Height: 1.000 km
Alg type: PCAPPI
CAPPI Range: 3 km to 129 km
Data: Radar Data
National Weather Watch Centre
Rainbow® Gematronik

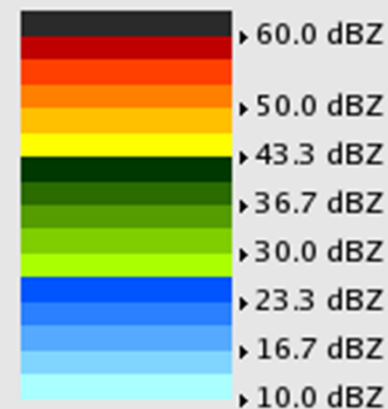




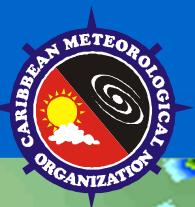
GUYANA RADAR



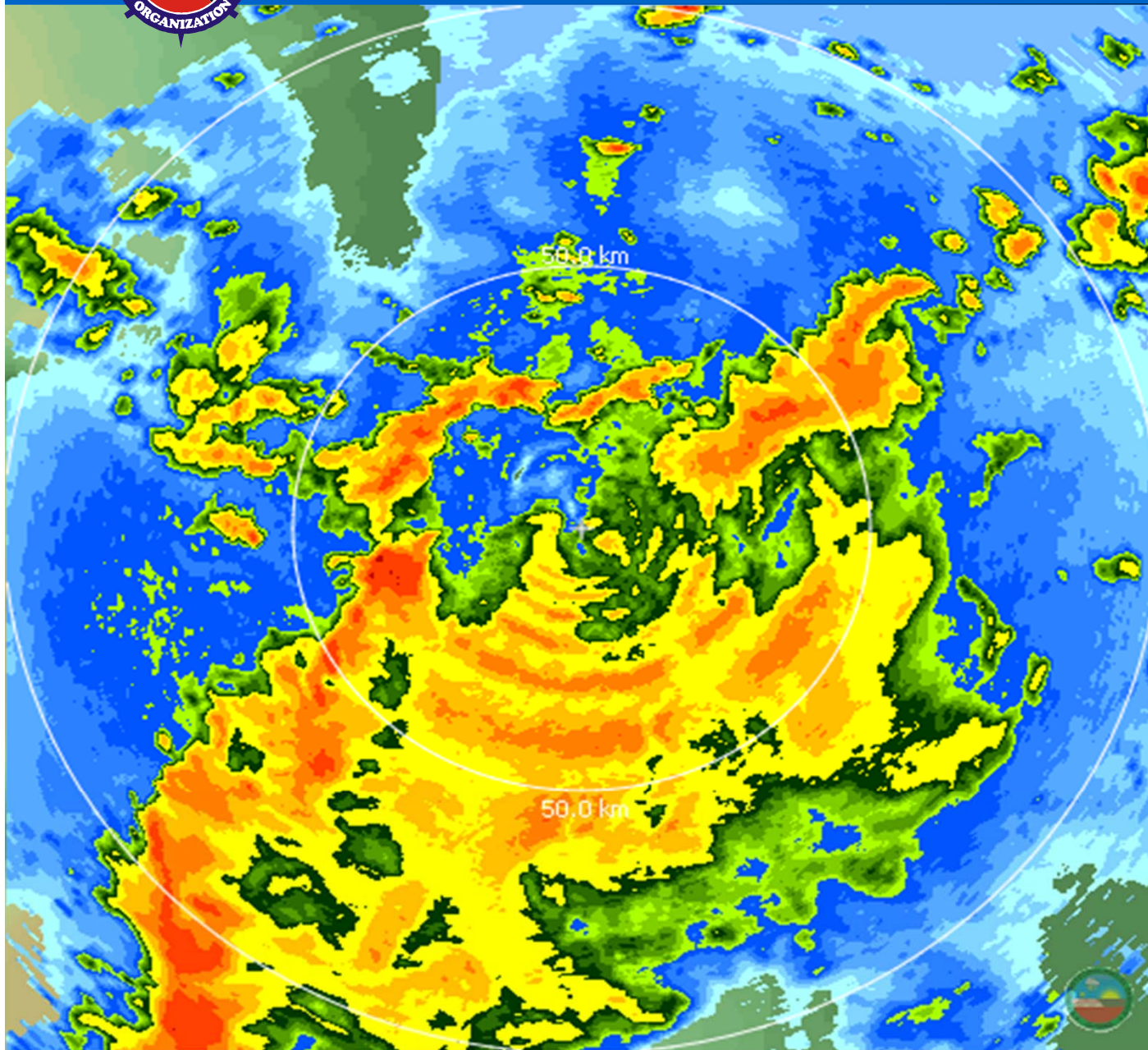
CAPPI (dBZ)
23:19 / 06-Mar-2011
Guyana



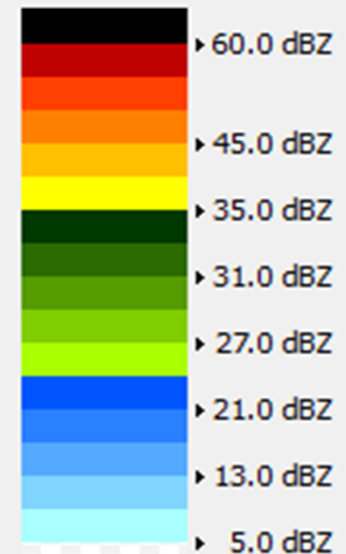
Pdf File: cappi_150km_1km.cappi
Clutter Filter: Doppler Num 6
Time sampling:41
PRF: 1000 Hz
Range: 150 km
Resolution: 0.600 km/pixel
Height: 1.000 km
Alg type: PCAPPI
CAPPI Range: 2 km to 102 km
Data: Radar Data
National Weather Watch Centre
Rainbow® Gematronik



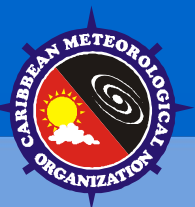
GUYANA RADAR



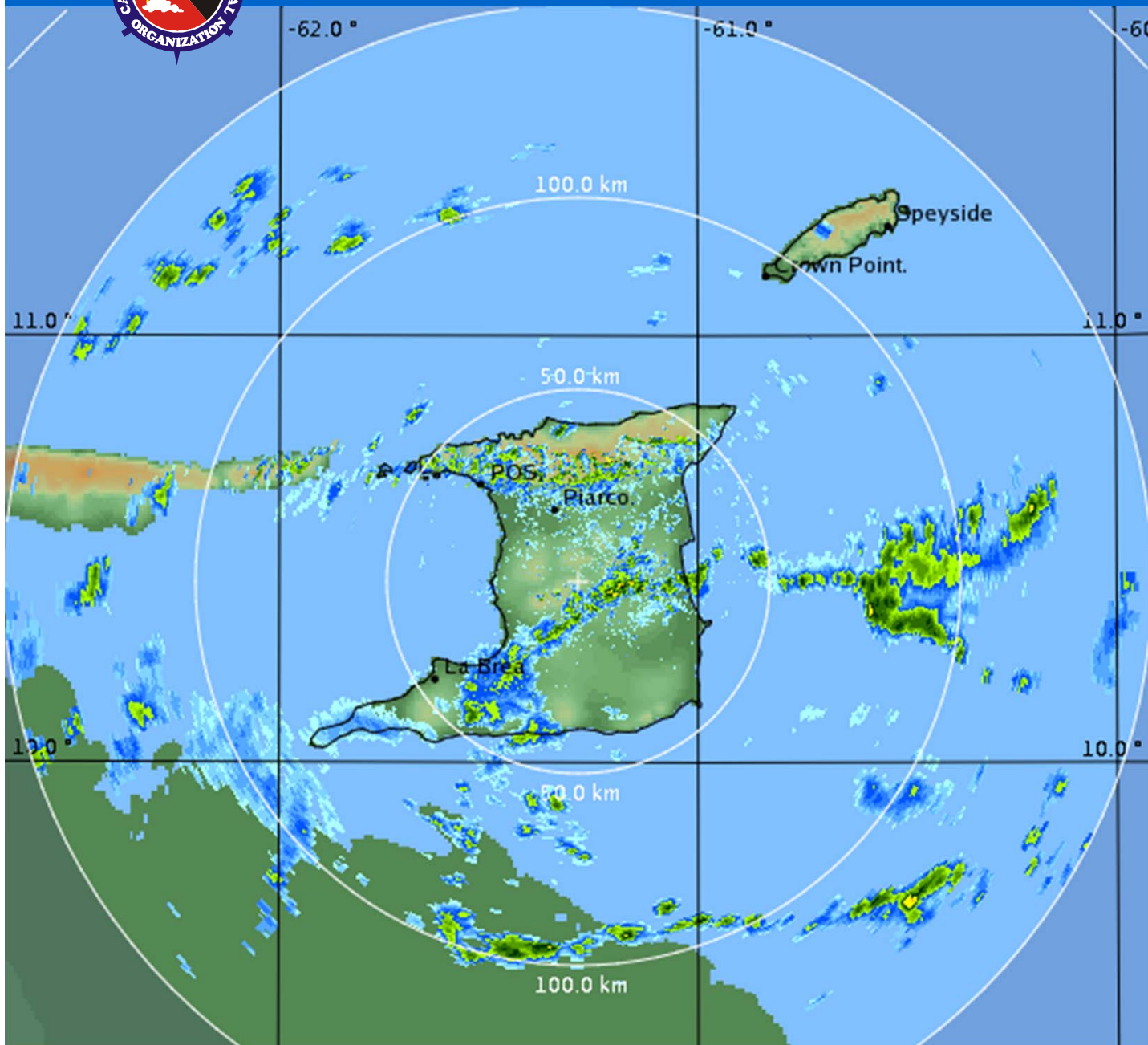
CMAX (dBZ)
05:14 / 22-Jul-2009
Carribean3



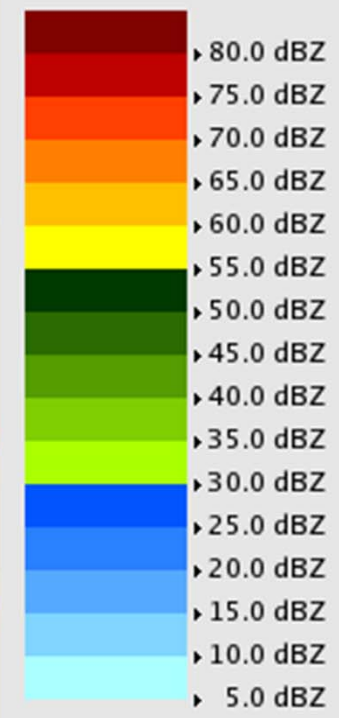
Pdf File: 100km_05deg.cmax
Clutter Filter: Doppler Num 6
Time sampling:41
PRF: 1000 Hz
Range: 100 km
Height: 0.500 km to
10.000 km
Hor Res: 0.400 km/pixel
Data: Radar Data
Rainbow® Gematronik



TRINIDAD RADAR



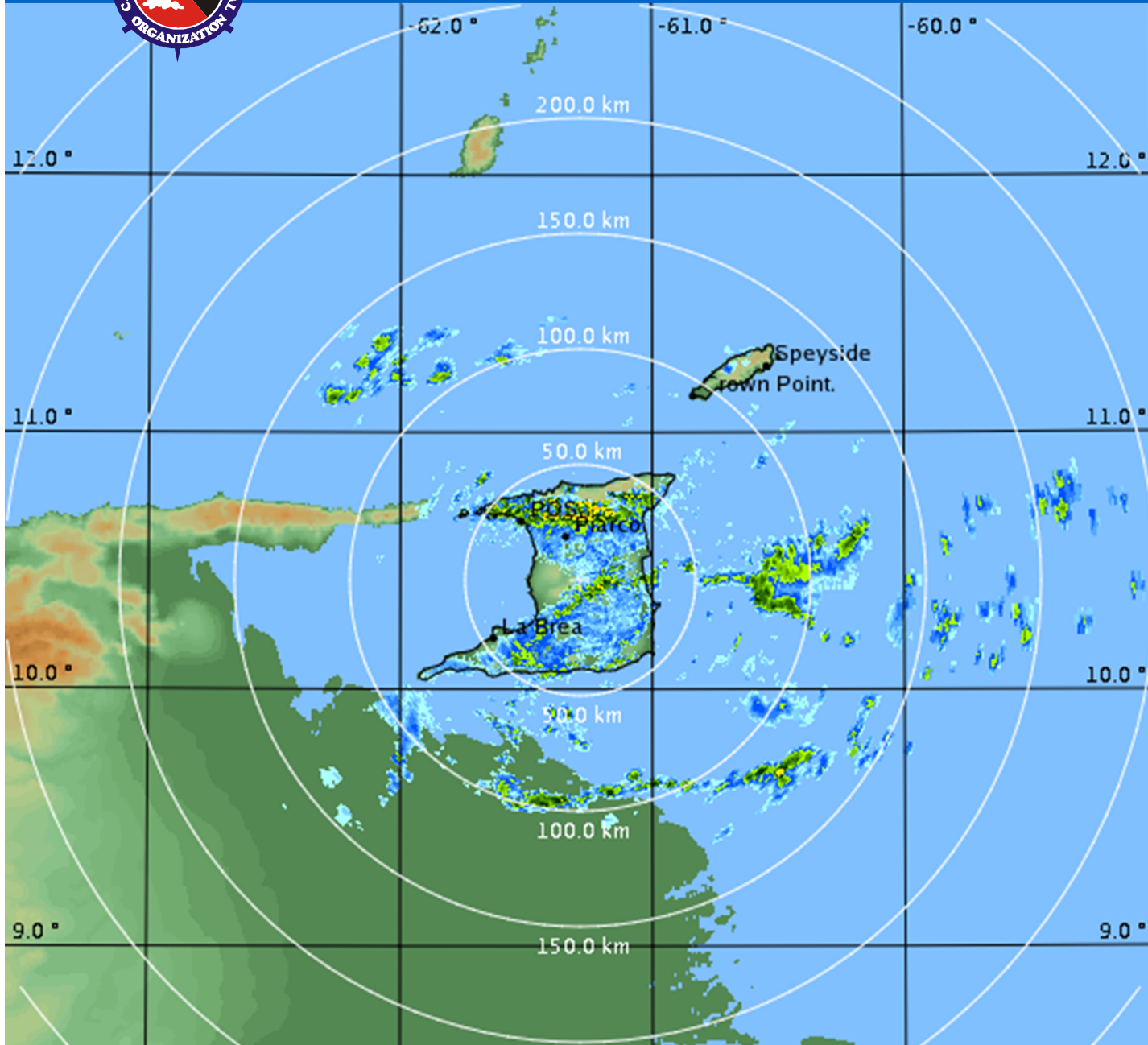
PPI (dBZ)
12:54 / 02-Jan-2011
TrinBago



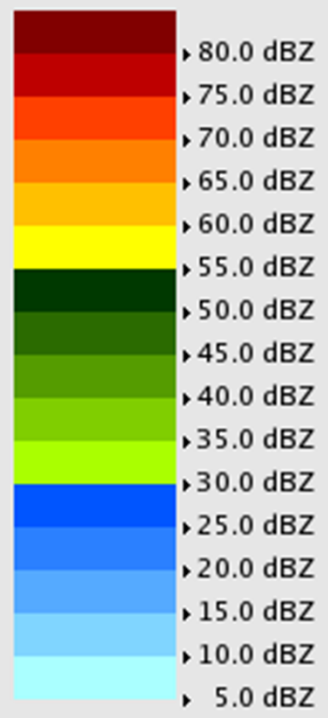
Pdf File: 150km_0_5deg.ppi
Clutter Filter: Doppler Num 6
Time sampling:55
PRF: 1000 Hz
Range: 150 km
Resolution: 0.500 km/pixel
Elevation: 0.1 deg
Data: Radar Data



TRINIDAD RADAR



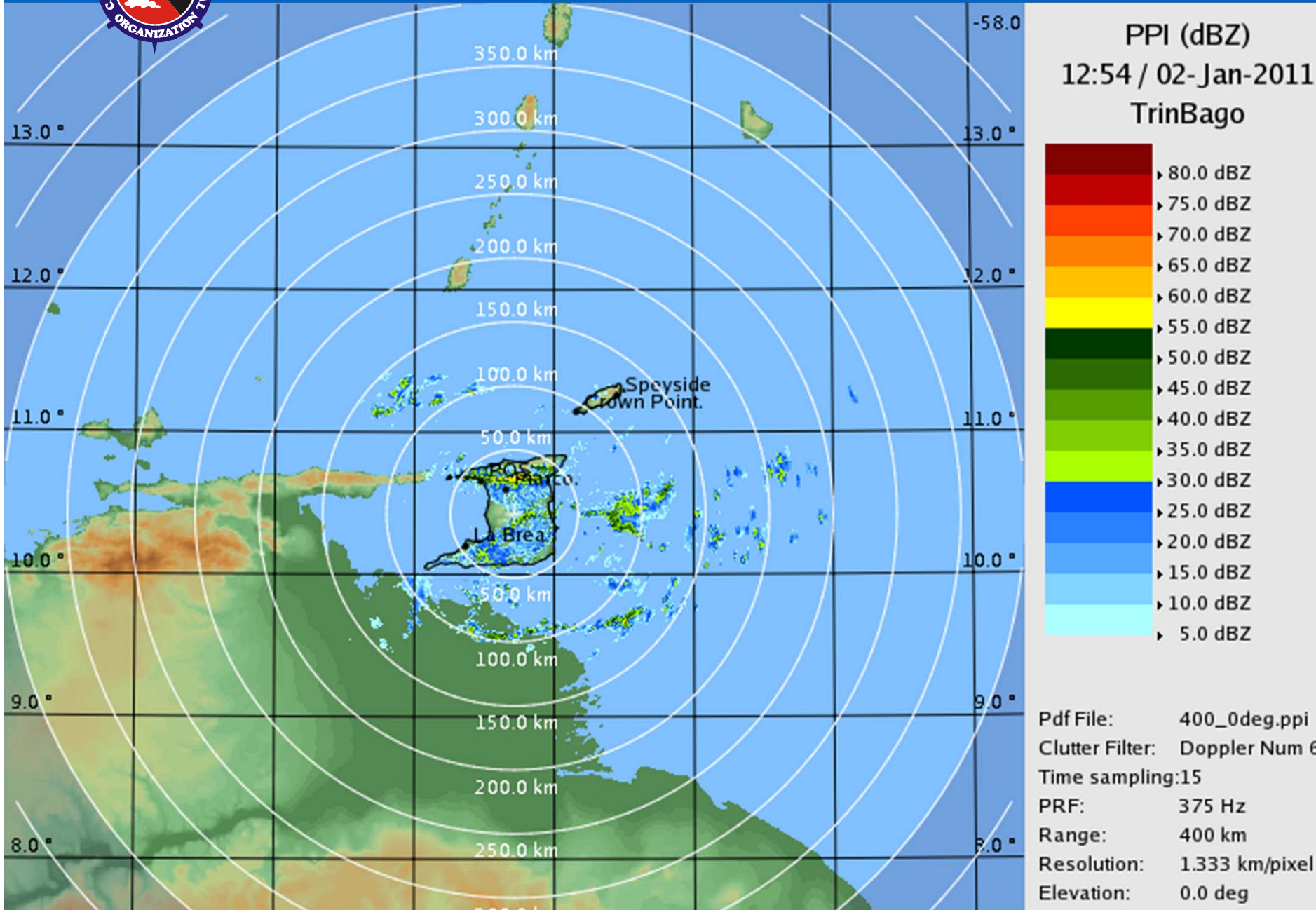
PPI (dBZ)
12:54 / 02-Jan-2011
TrinBago



Pdf File: 250km_1_5deg.ppi
Clutter Filter: Doppler Num 6
Time sampling:15
PRF: 375 Hz
Range: 250 km
Resolution: 0.833 km/pixel
Elevation: 0.0 deg
Data: Radar Data

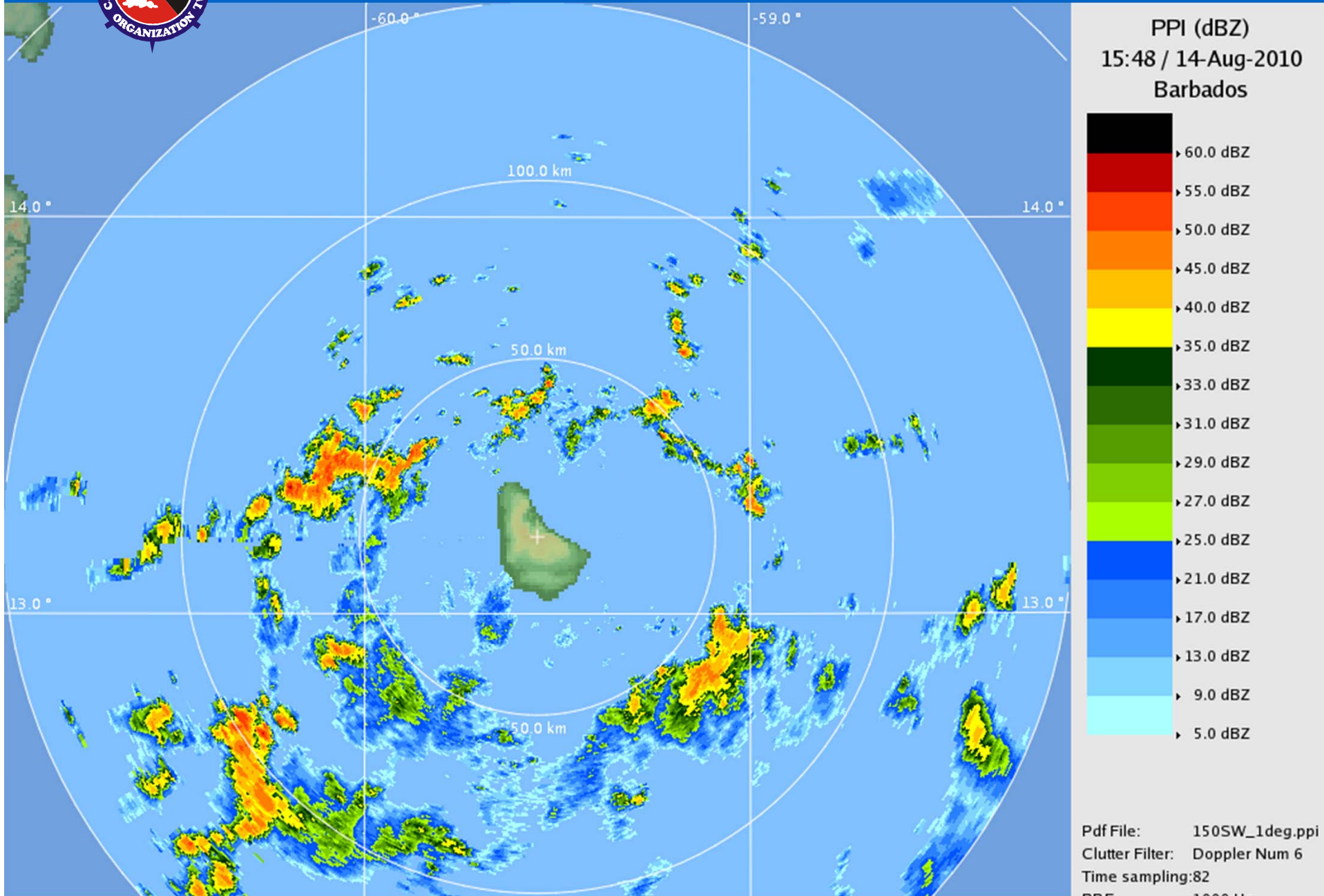


TRINIDAD RADAR



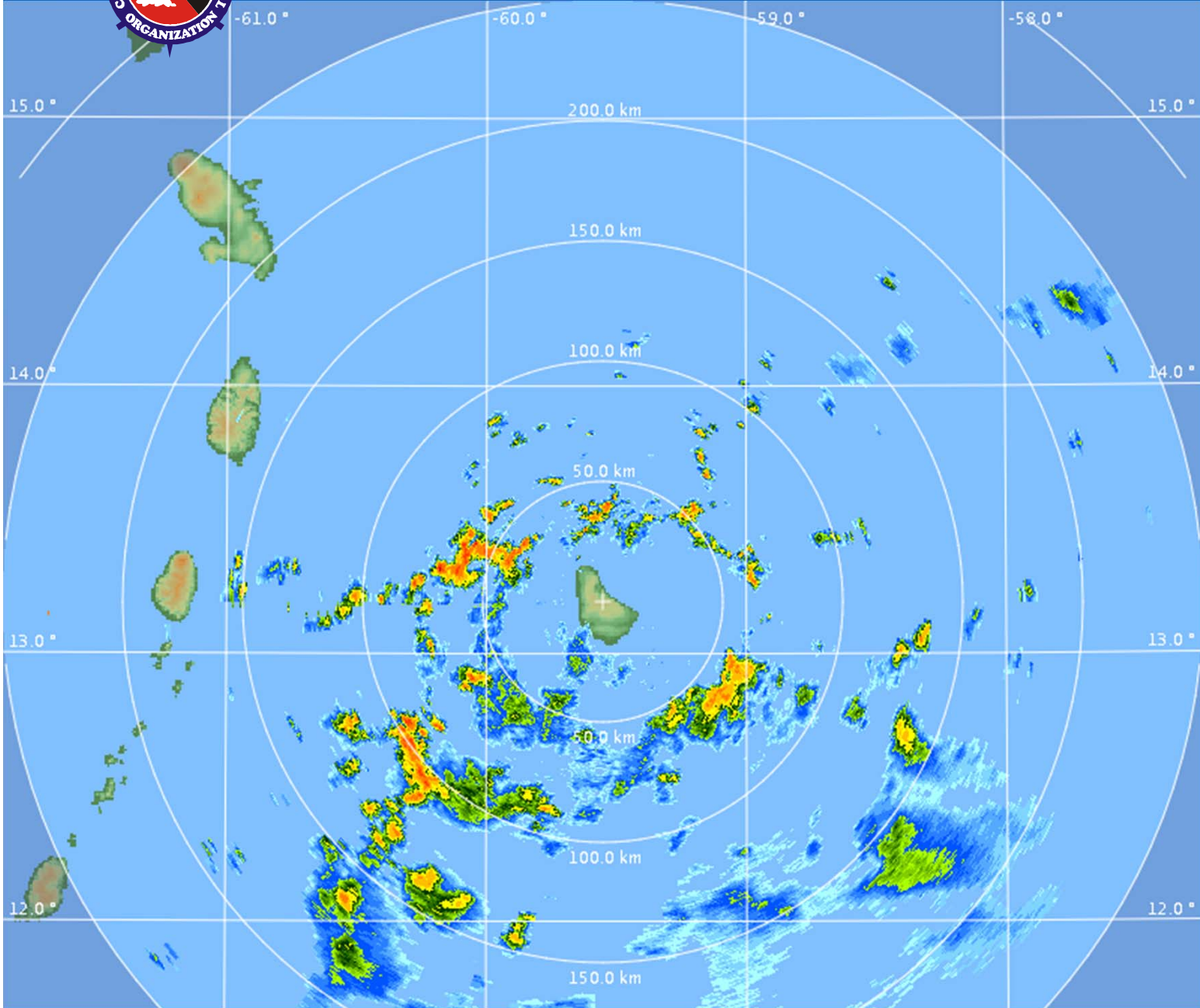


BARBADOS RADAR





BARBADOS RADAR



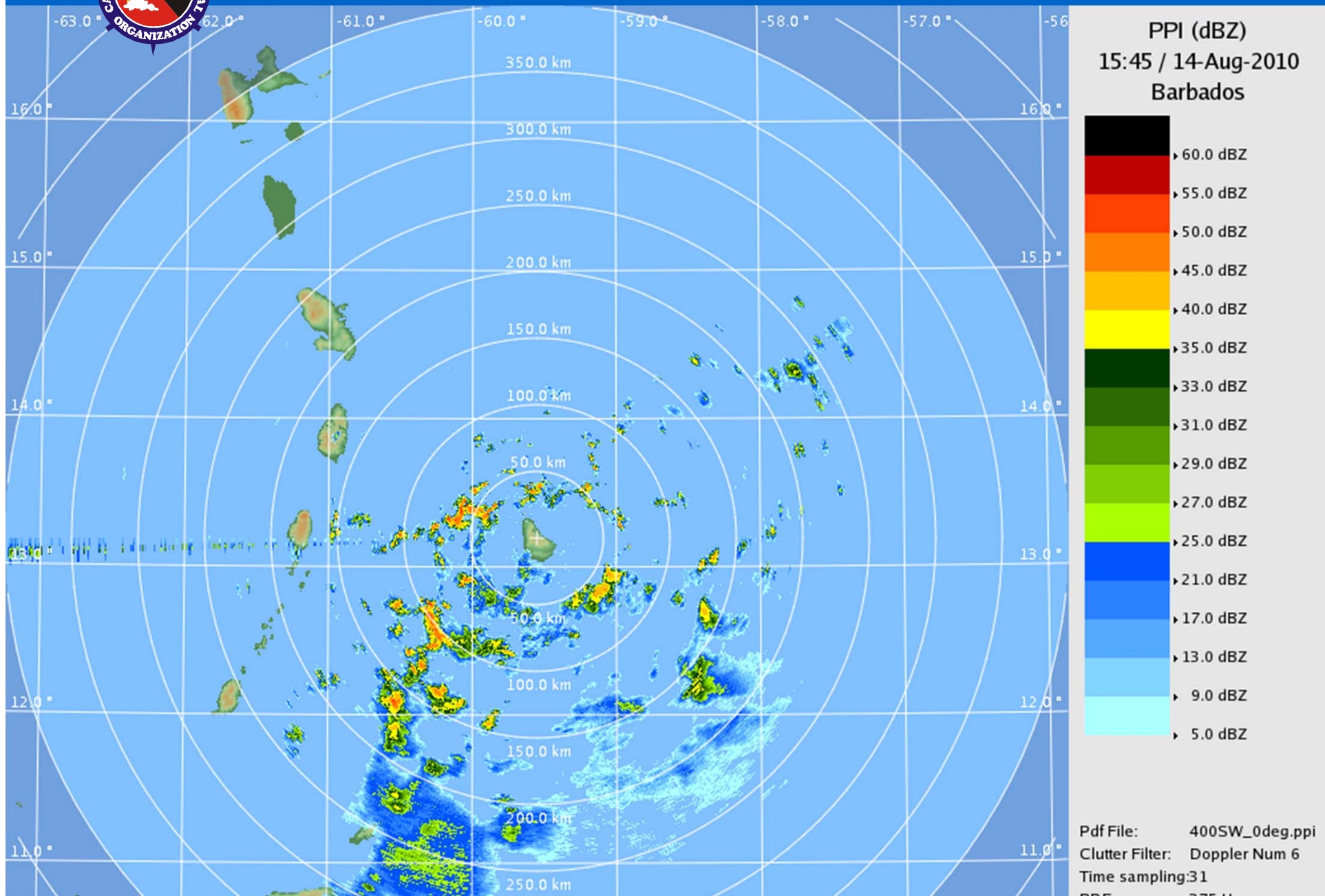
PPI (dBZ)
15:45 / 14-Aug-2010
Barbados

Black	> 60.0 dBZ
Red	> 55.0 dBZ
Orange	> 50.0 dBZ
Light Orange	> 45.0 dBZ
Yellow	> 40.0 dBZ
Light Green	> 35.0 dBZ
Dark Green	> 33.0 dBZ
Medium Green	> 31.0 dBZ
Light Green	> 29.0 dBZ
Yellow-Green	> 27.0 dBZ
Light Green	> 25.0 dBZ
Blue	> 21.0 dBZ
Light Blue	> 17.0 dBZ
Very Light Blue	> 13.0 dBZ
Cyan	> 9.0 dBZ
White	> 5.0 dBZ

Pdf File: 250SW_1deg.ppi
Clutter Filter: Doppler Num 6
Time sampling: 49
PRF: 600 Hz

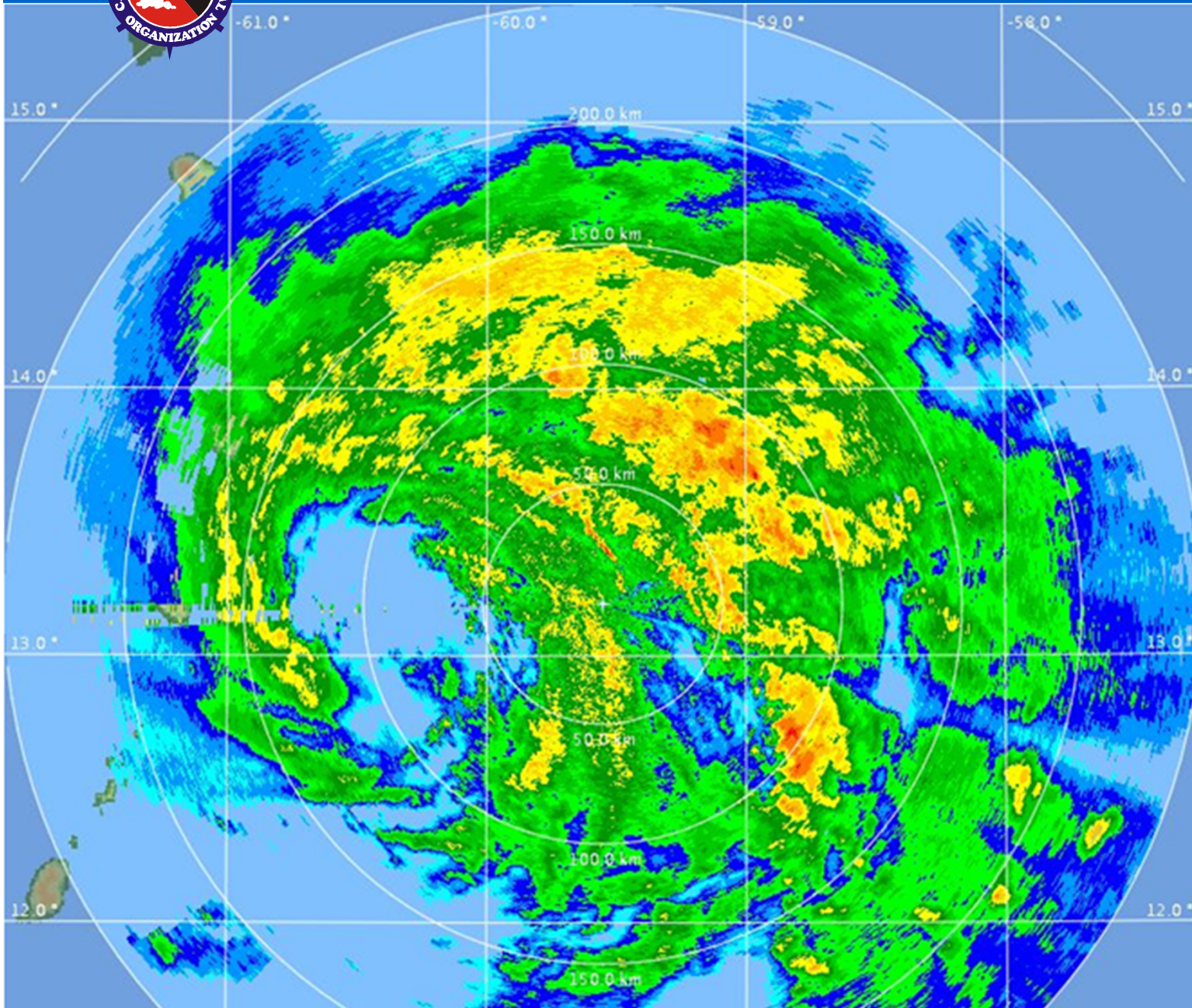


BARBADOS RADAR

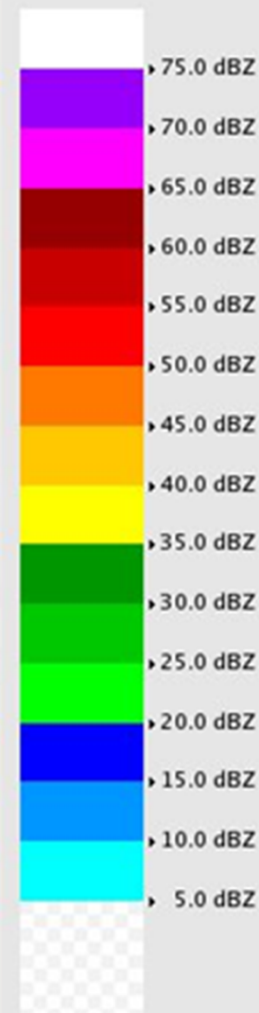




BARBADOS RADAR



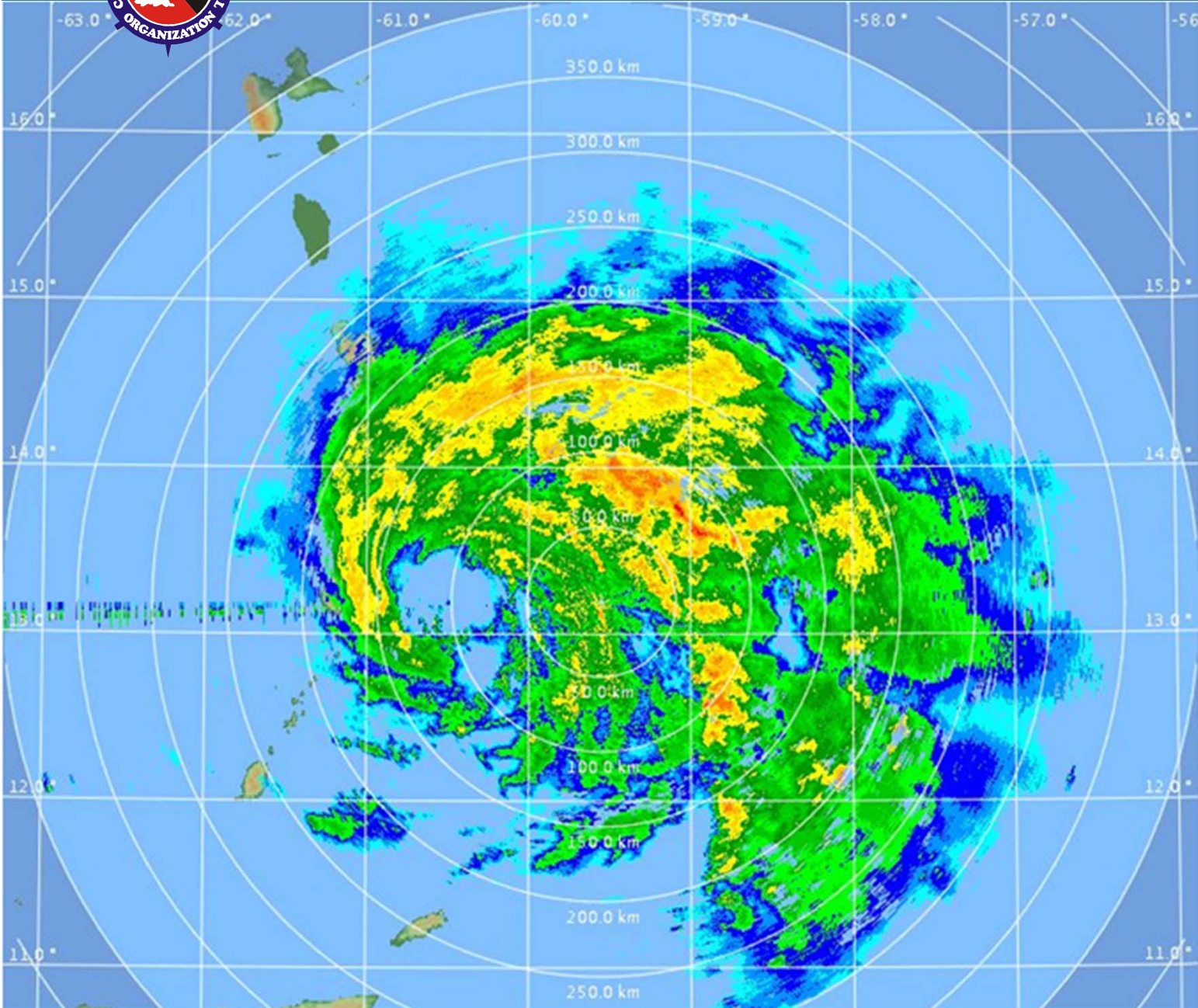
PPI (dBZ)
13:45 / 30-Oct-2010
Barbados



Pdf File: 250SW_1deg.ppi
Clutter Filter: Doppler Num 6
Time sampling:49
PRF: 600 Hz



BARBADOS RADAR



PPI (dBZ)
14:00 / 30-Oct-2010
Barbados

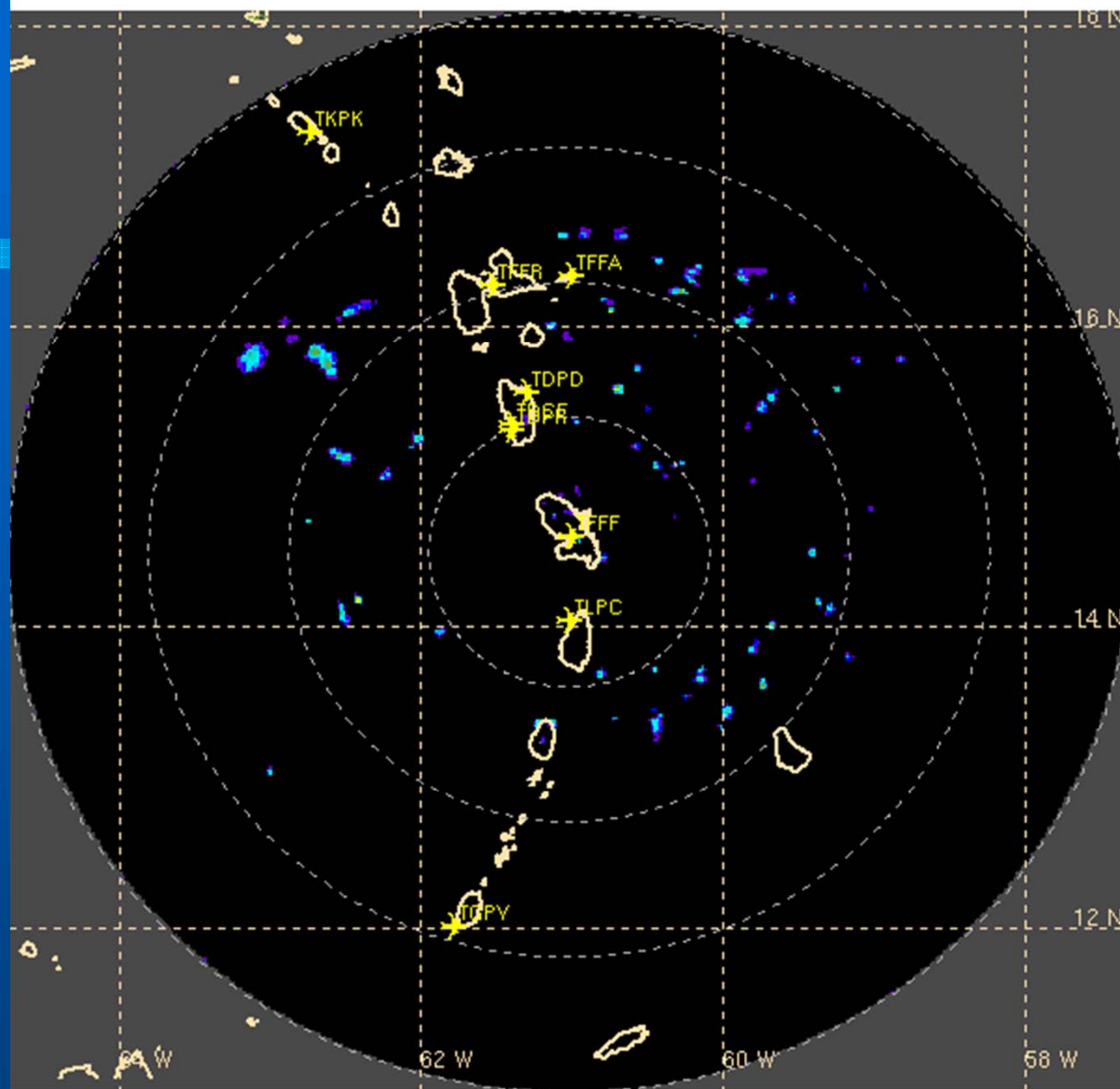


Pdf File: 400SW_0deg.ppi
Clutter Filter: Doppler Num 6
Time sampling: 31
DBZ: 375 Hz



Radar MARTINIQUE (FWI) 07/03/2011 04H40 UTC (Loc+4H)

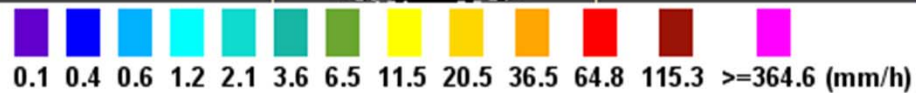
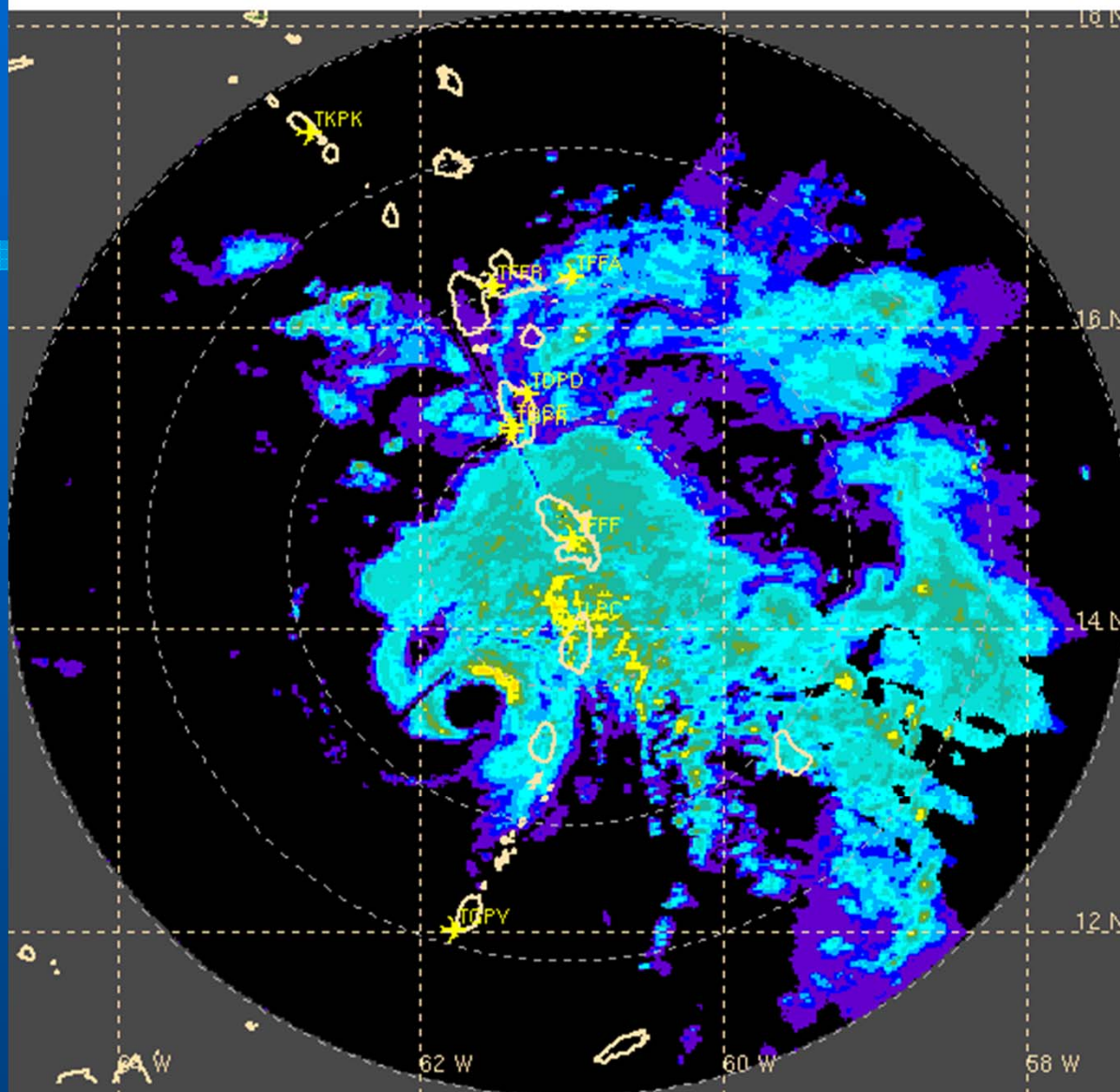
WMO: 78924 - Latitude: 14.501 N - Longitude: 61.018 W - range 400KM - Resolution 2KM





Radar MARTINIQUE (FWI) 31/10/2010 00H45 UTC (Loc+4H)

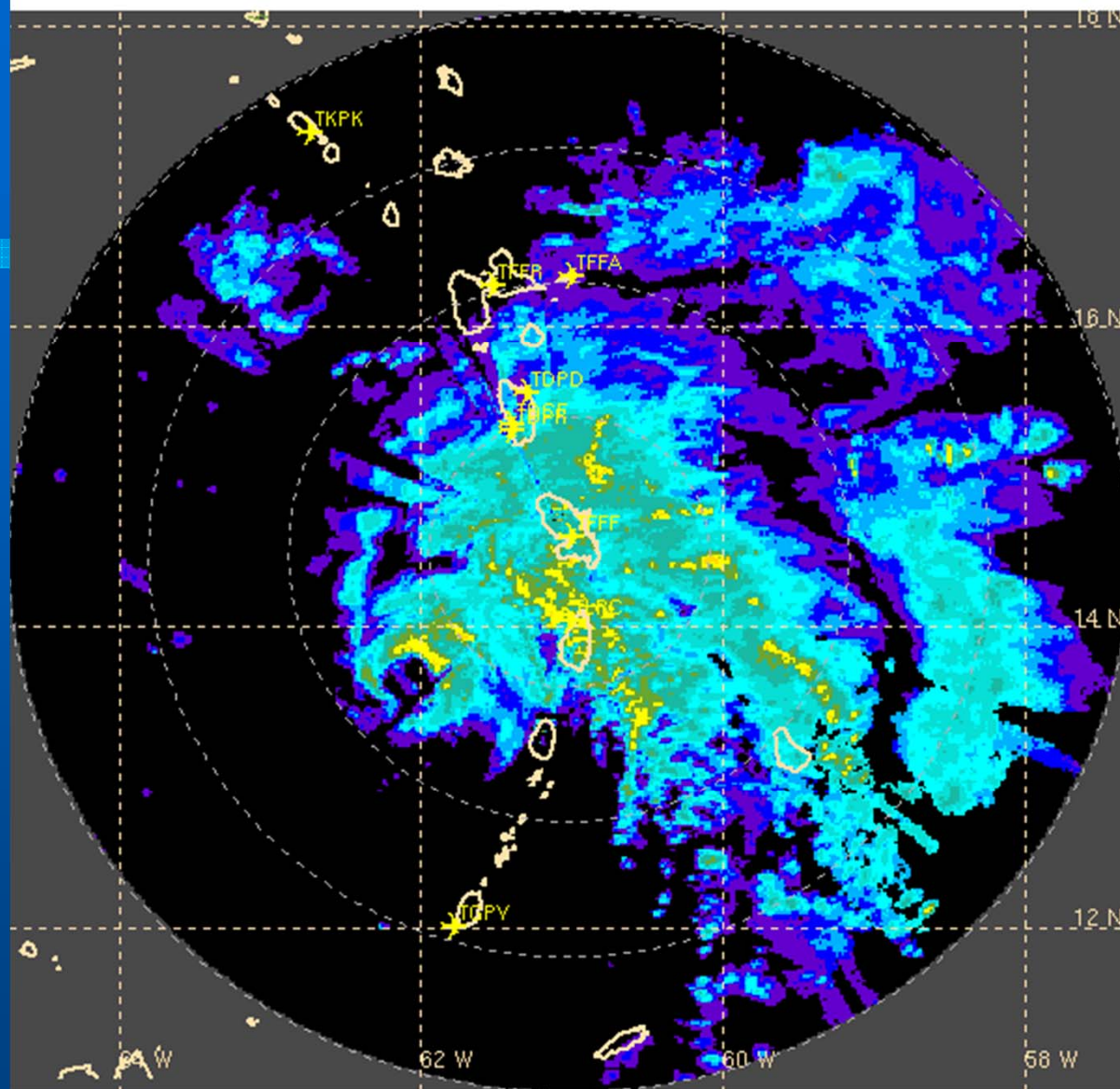
WMO: 78924 - Latitude: 14.501 N - Longitude: 61.018 W - range 400KM - Resolution 2KM





Radar MARTINIQUE (FWI) 31/10/2010 03H25 UTC (Loc+4H)

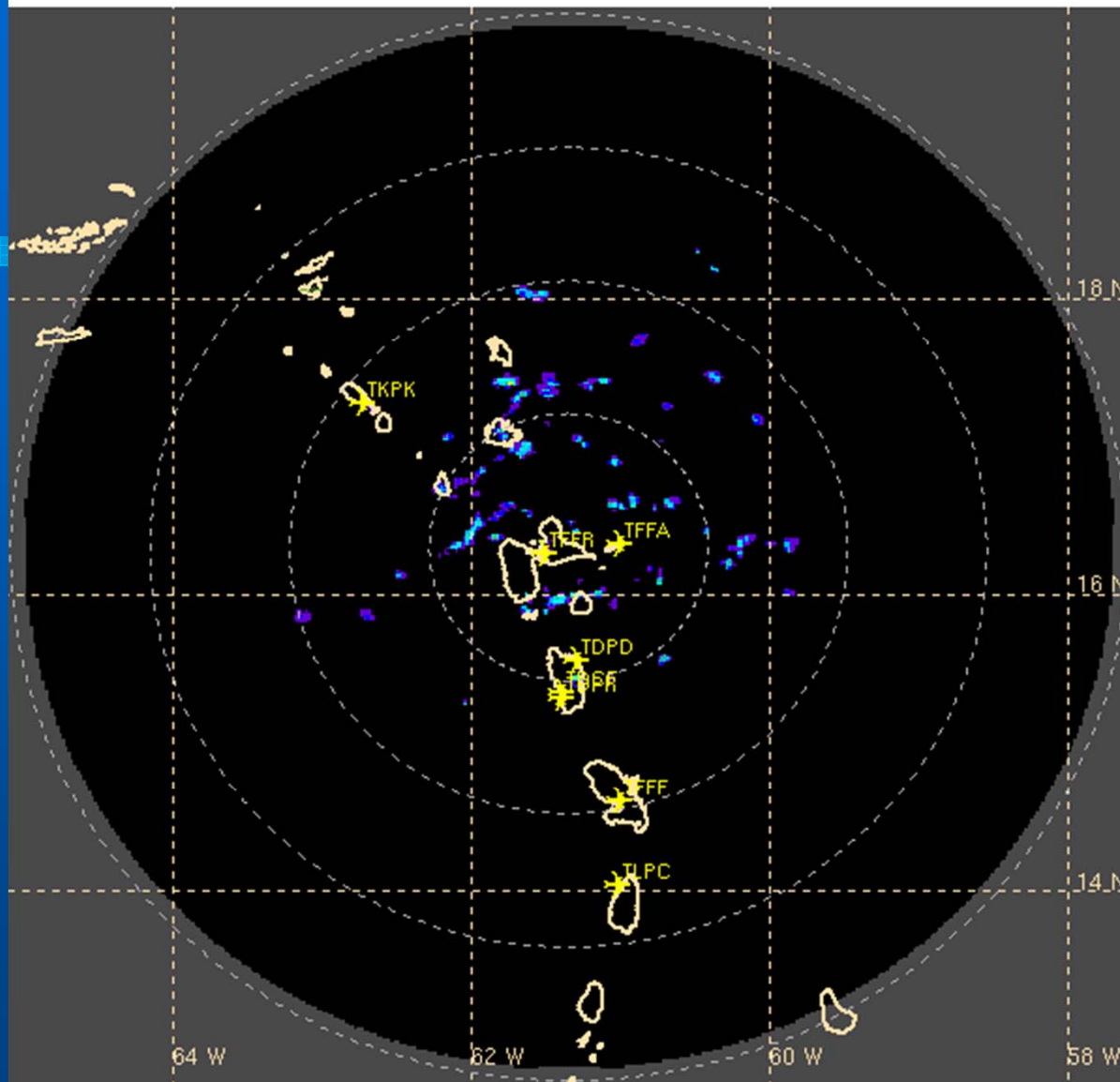
WMO: 78924 - Latitude: 14.501 N - Longitude: 61.018 W - range 400KM - Resolution 2KM





Radar GUADELOUPE (FWI) 07/03/2011 04H40 UTC (Loc+4H)

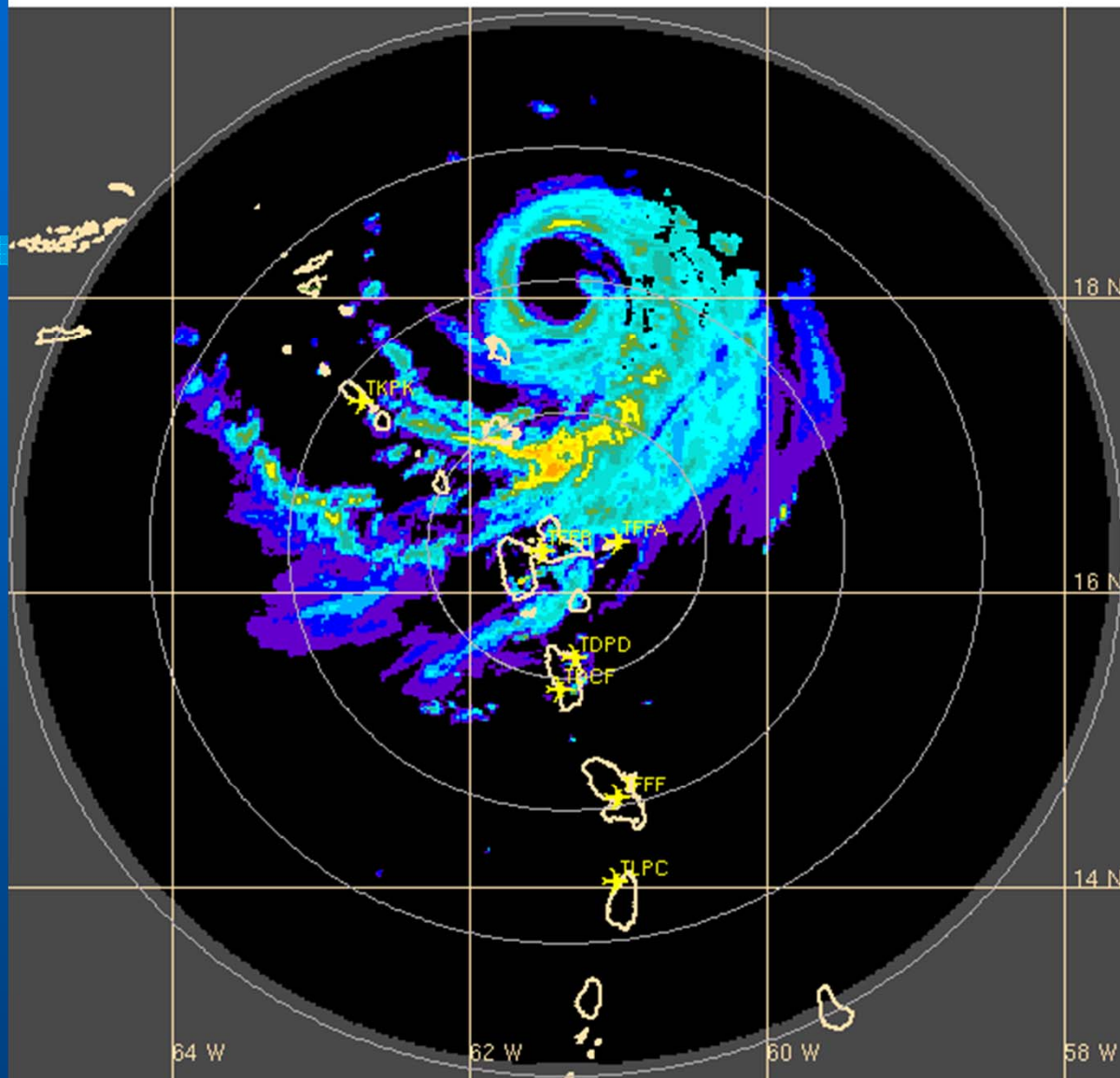
WMO: 78891 - Latitude: 16.316 N - Longitude: 61.346 W - range 400KM - Resolution 2KM





Radar GUADELOUPE (FWI) 30/08/2010 04H35 UTC (Loc+4H)

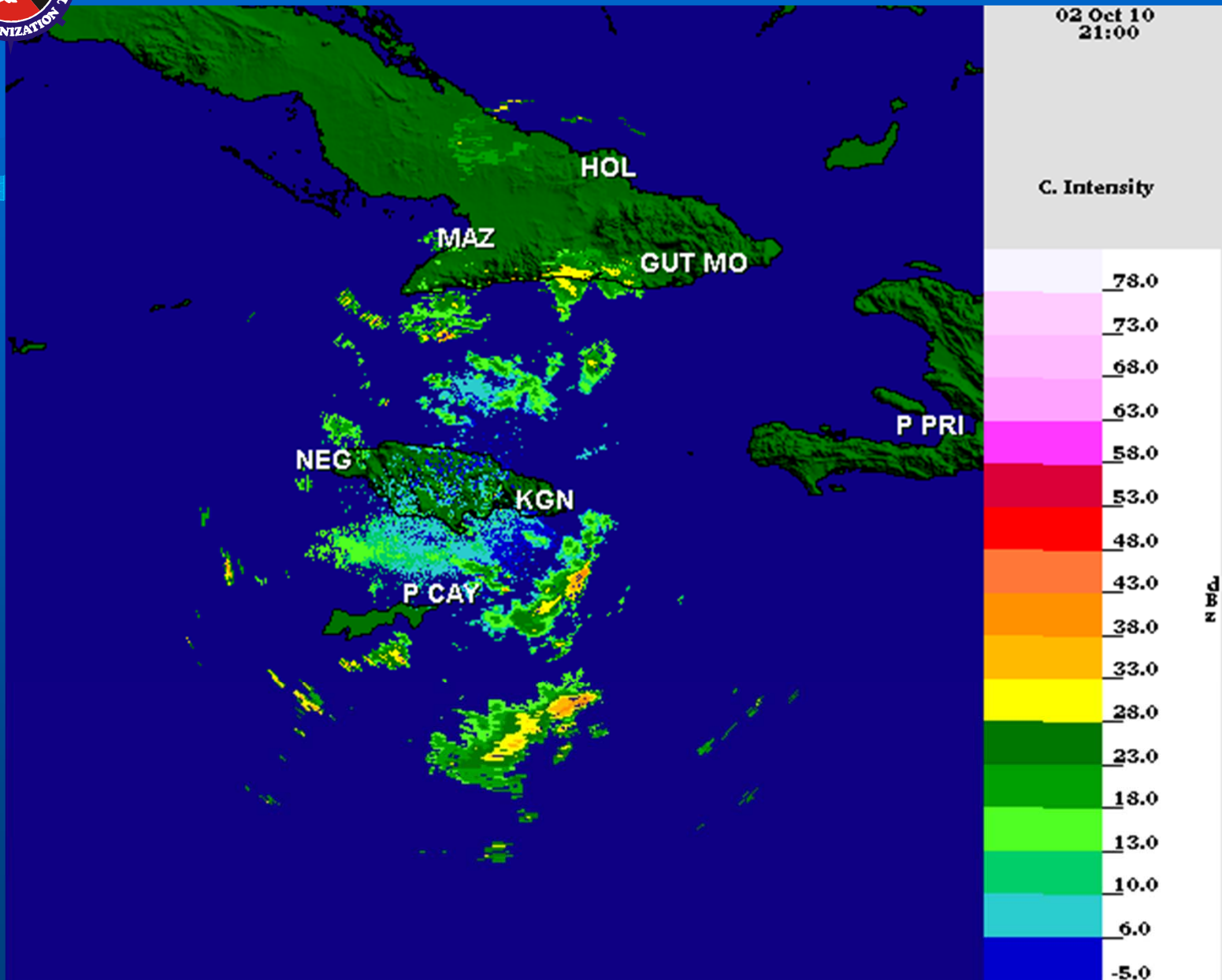
WMO: 78891 - Latitude: 16.316 N - Longitude: 61.346 W - range 400KM - Resolution 2KM





JAMAICA RADAR

02 Oct 10
21:00

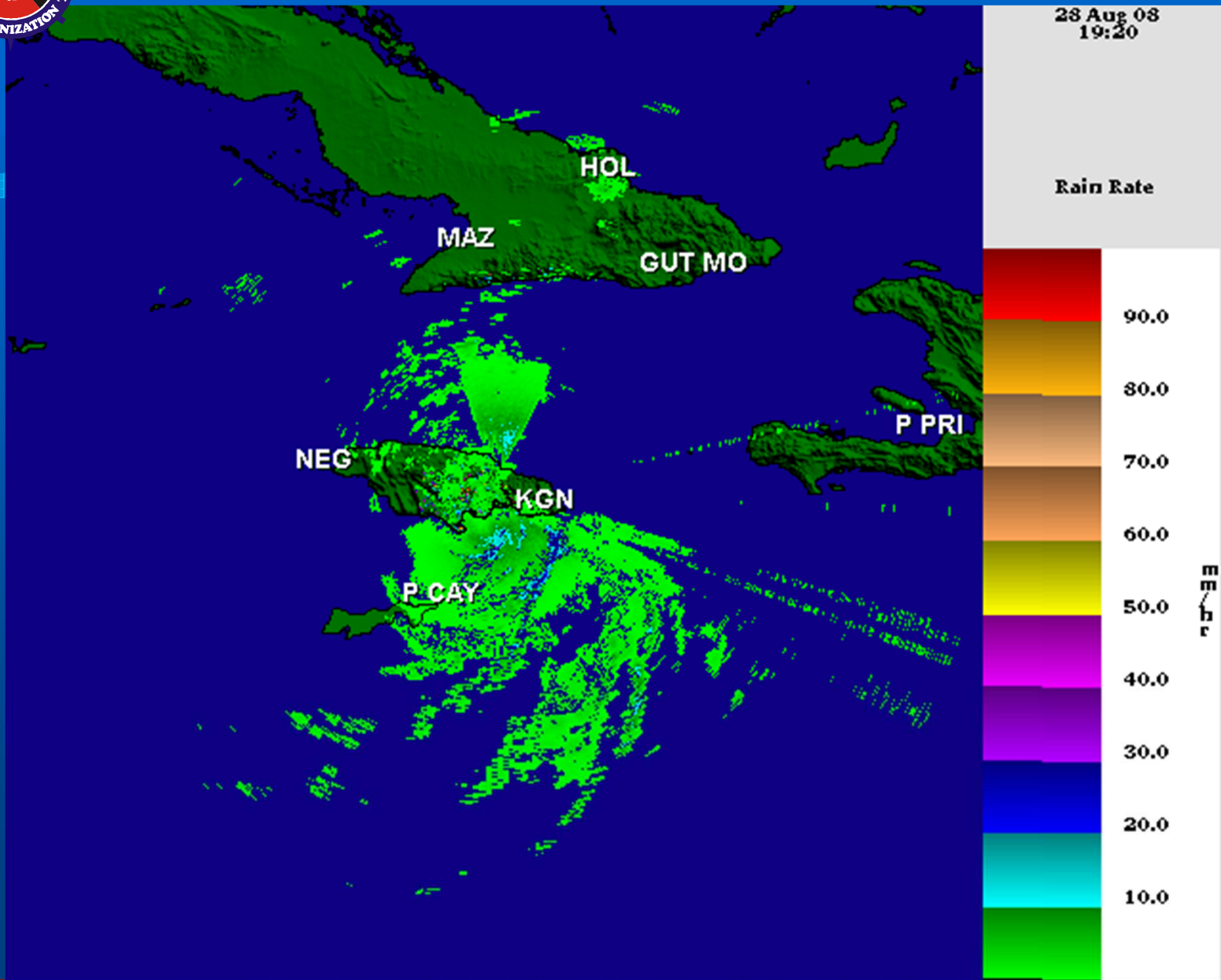


Product Type: PPI Corrected Intensity

Tilt: 0 Elevation: 0.8 Degs



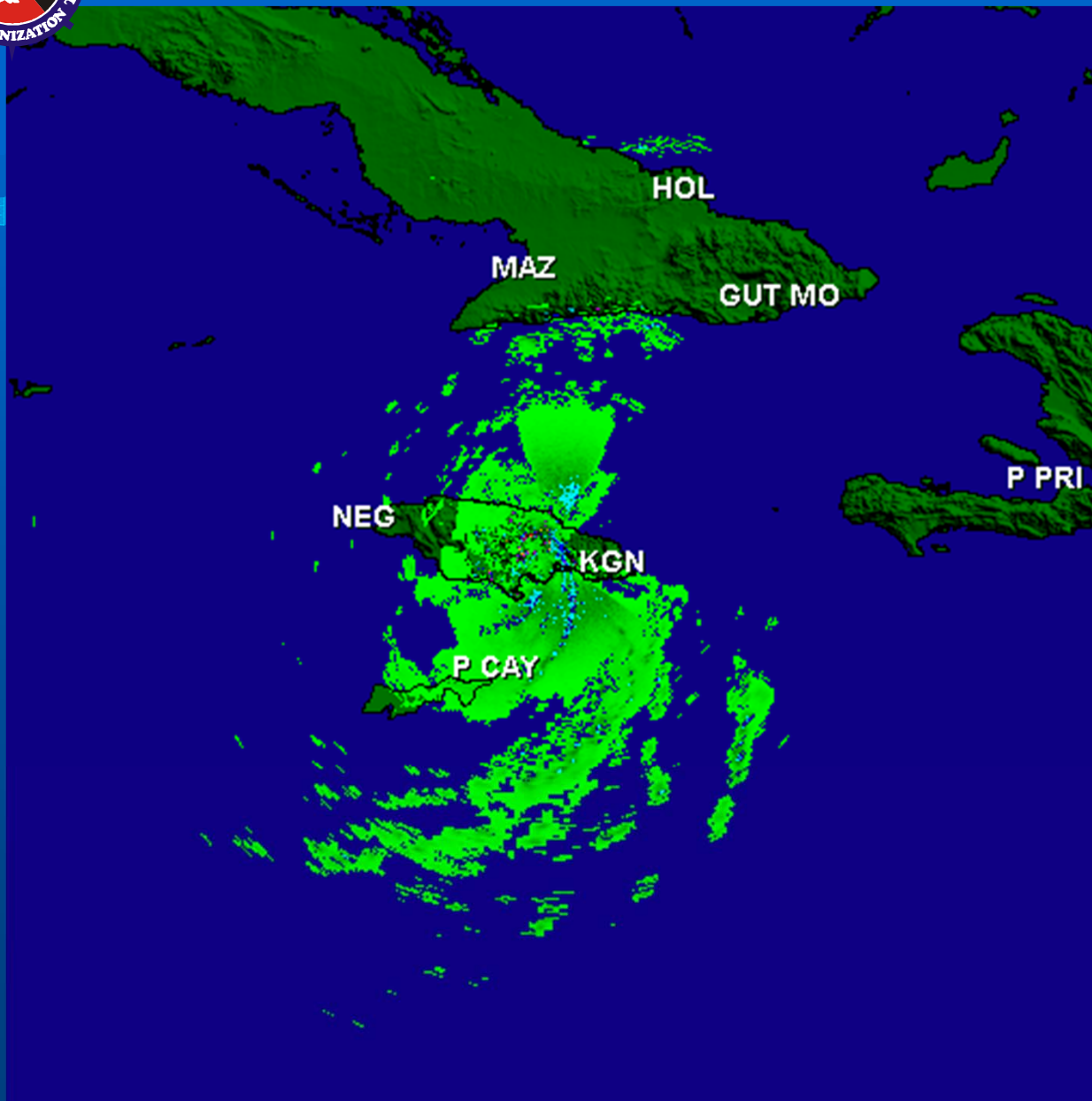
JAMAICA RADAR



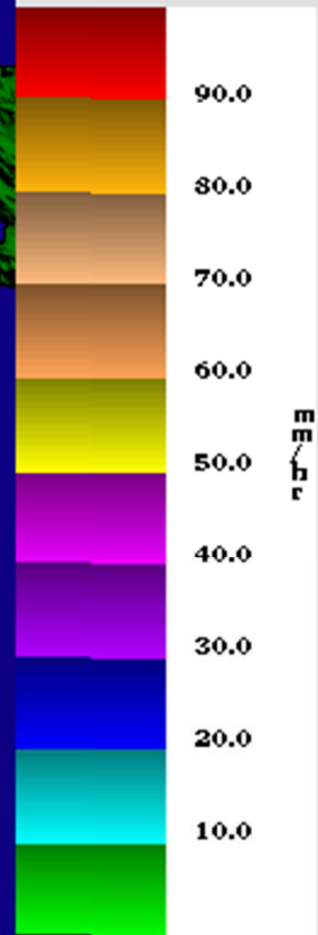


JAMAICA RADAR

28 Aug 08
22:40



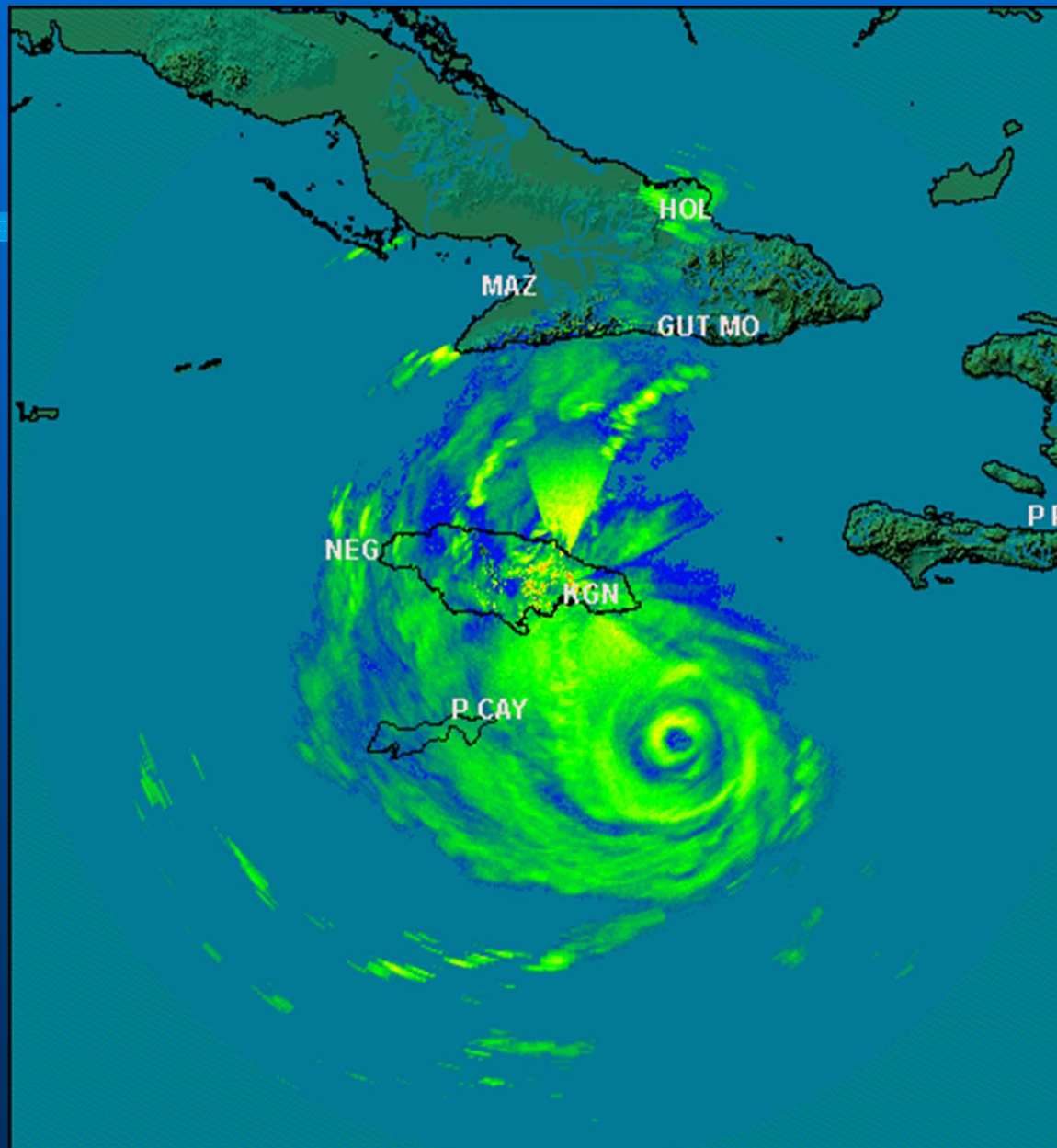
Rain Rate



Product Type: PPI Rain Rate Tilt: 1 Elevation: 0.0 Degs A: 200.0 B: 1.60

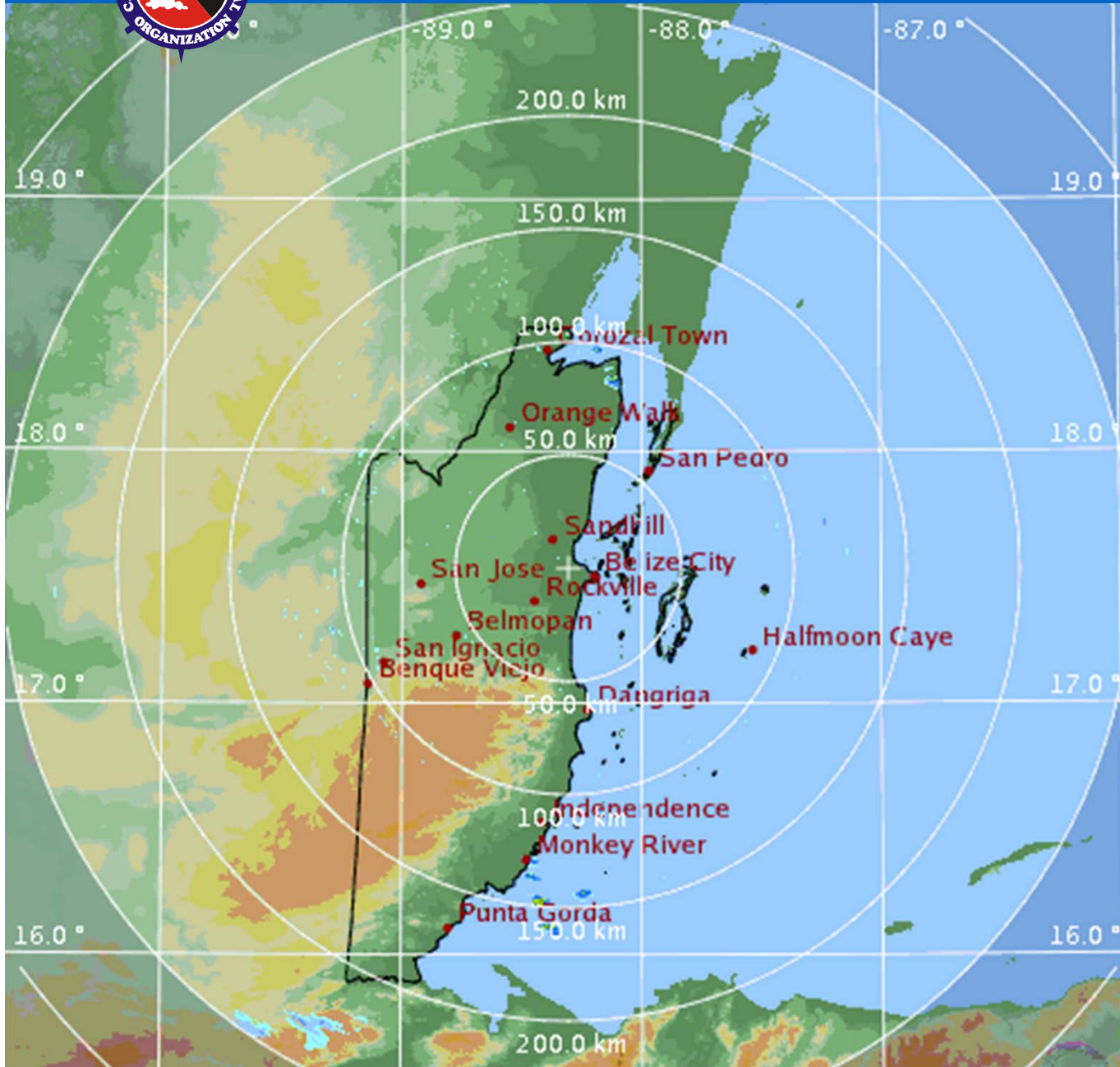


JAMAICA RADAR

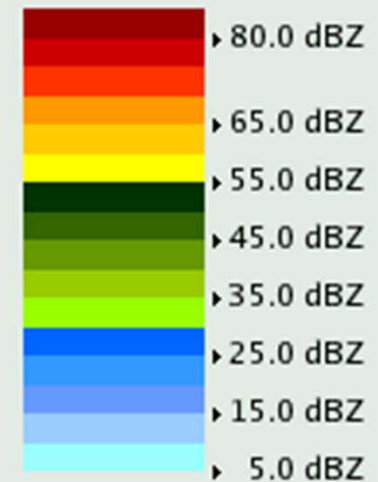




BELIZE RADAR



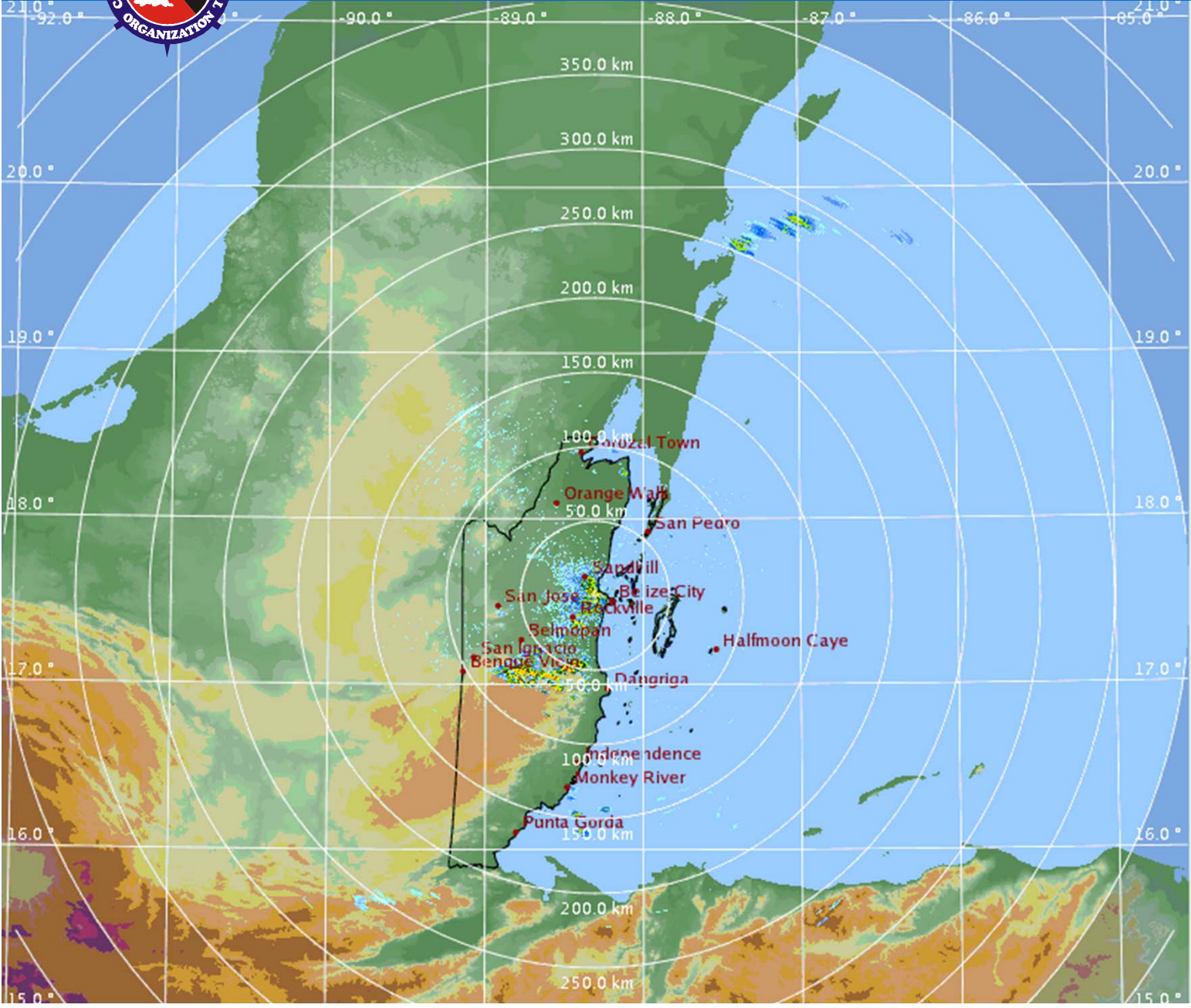
CAPPI (dBZ)
08:30 / 07-Mar-2011
Philip Goldson Airport



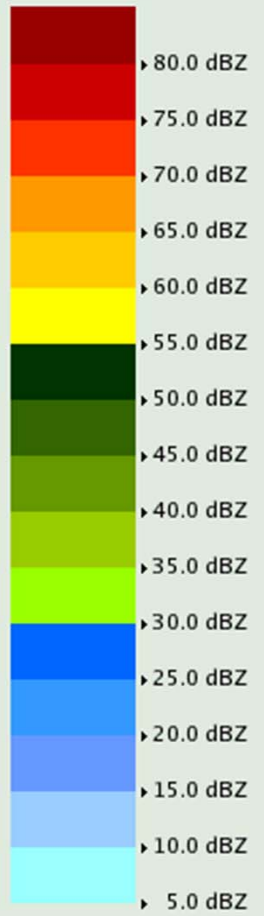
Pdf File: 250km_2km.cappi
Clutter Filter: Doppler Num 10
Time sampling:20
PRF: 400 Hz
Range: 250 km
Resolution: 1.000 km/pixel
Height: 2.000 km
Alg type: PCAPPI
CAPPI Range: 9 km to 124 km
Data: Radar Data
Rainbow® Gematronik



BELIZE RADAR



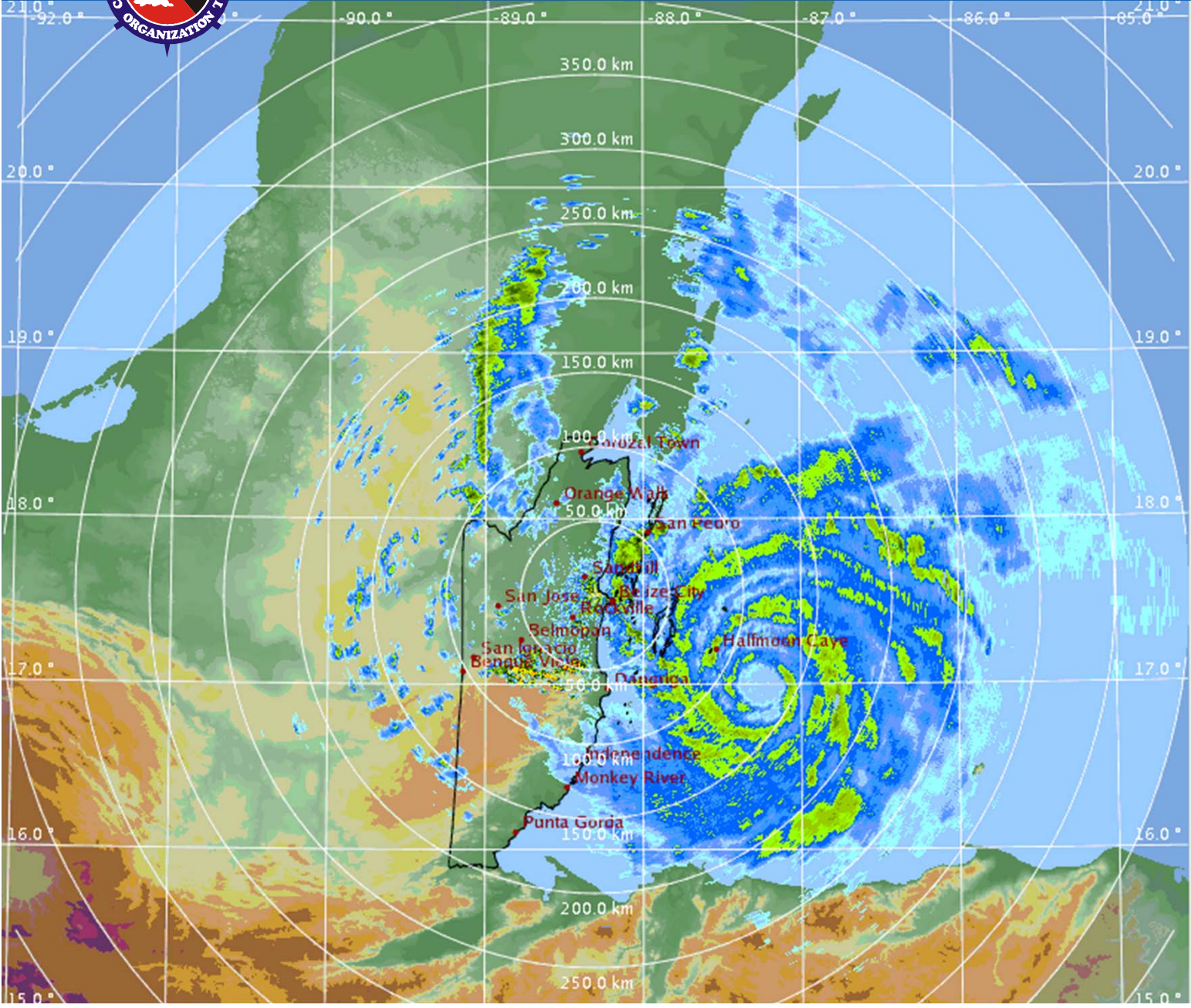
PPI (dBZ)
08:30 / 07-Mar-2011
Philip Goldson Airport



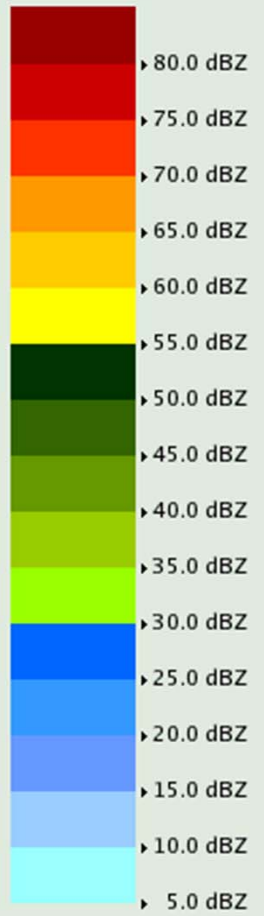
Pdf File: 400km_00deg.ppi
Clutter Filter: None
Time sampling:18
PRF: 333 Hz



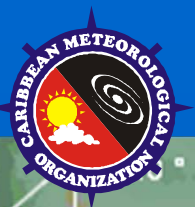
BELIZE RADAR



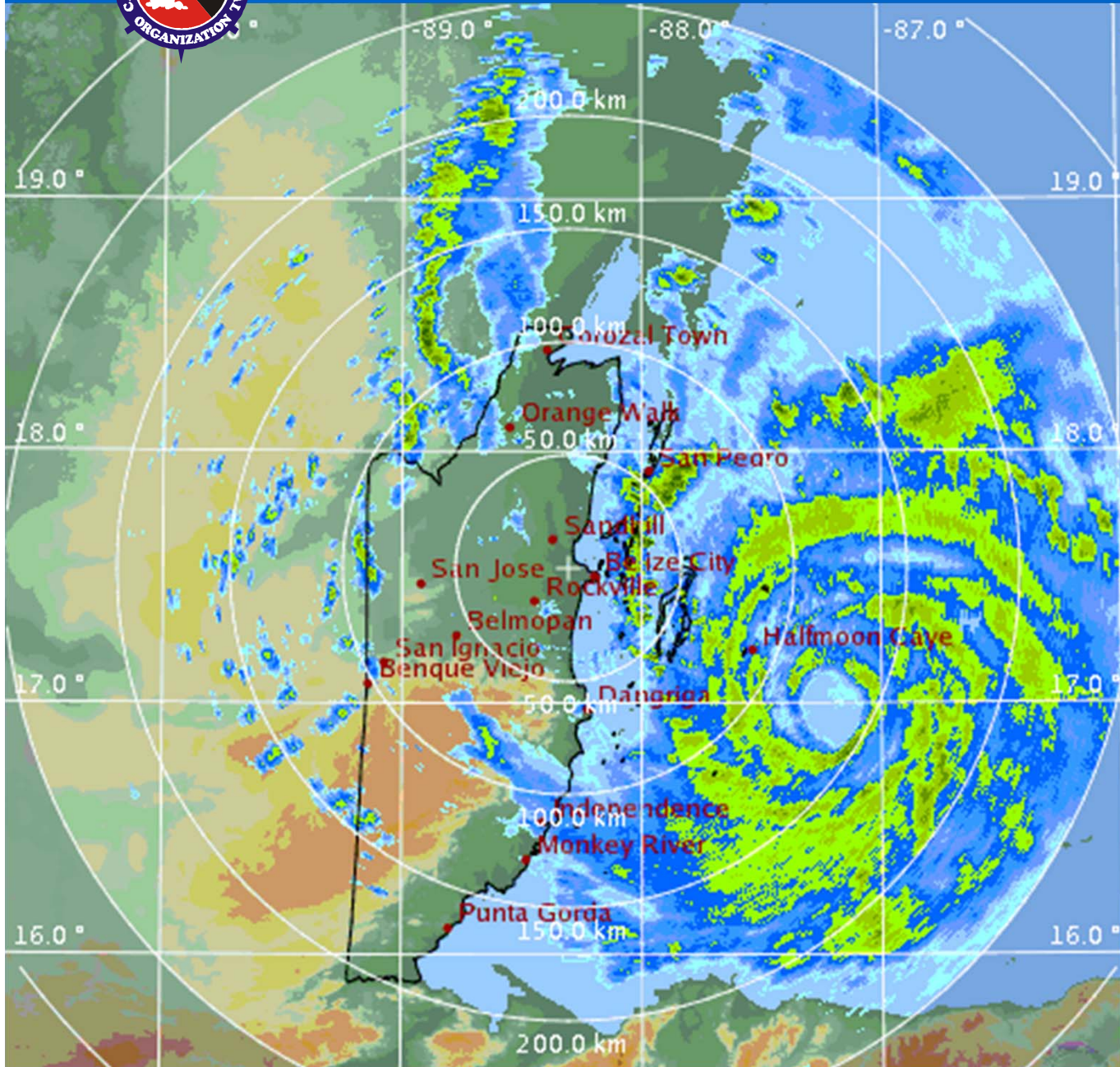
PPI (dBZ)
17:35 / 24-Oct-2010
Philip Goldson Airport



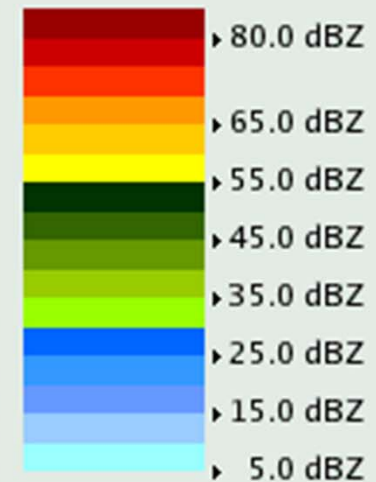
Pdf File: 400km_00deg.ppi
Clutter Filter: None
Time sampling: 18
PRF: 333 Hz



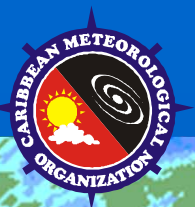
BELIZE RADAR



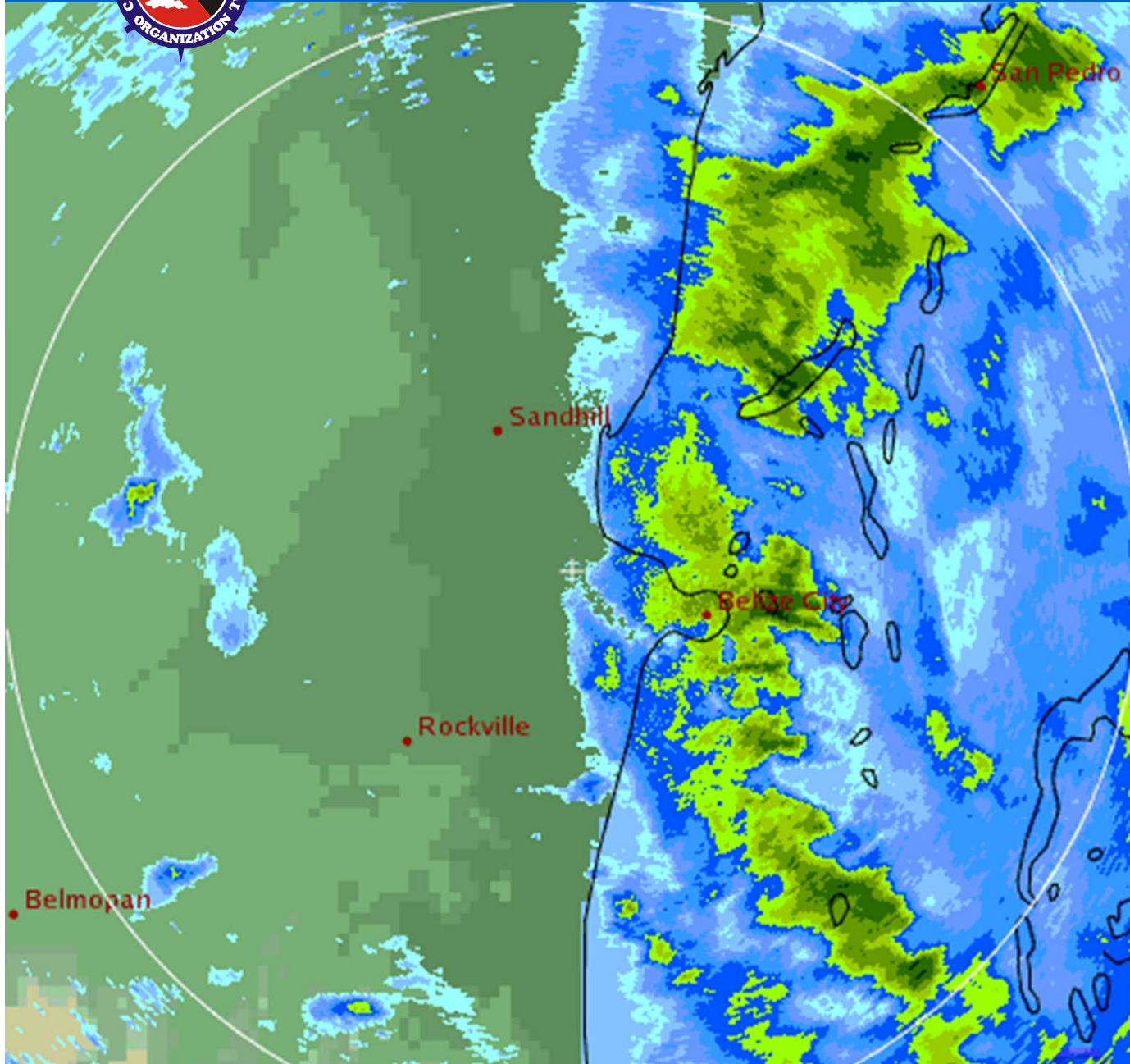
CAPPI (dBZ)
17:15 / 24-Oct-2010
Philip Goldson Airport



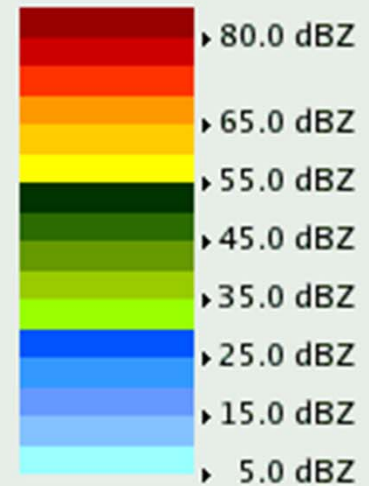
Pdf File: 250km_2km.cappi
Clutter Filter: Doppler Num 10
Time sampling:20
PRF: 400 Hz
Range: 250 km
Resolution: 1.000 km/pixel
Height: 2.000 km
Alg type: PCAPPI
CAPPI Range: 9 km to 124 km
Data: Radar Data
Rainbow® Gematronik



BELIZE RADAR



CAPPI (dBZ)
17:38 / 24-Oct-2010
Philip Goldson Airport

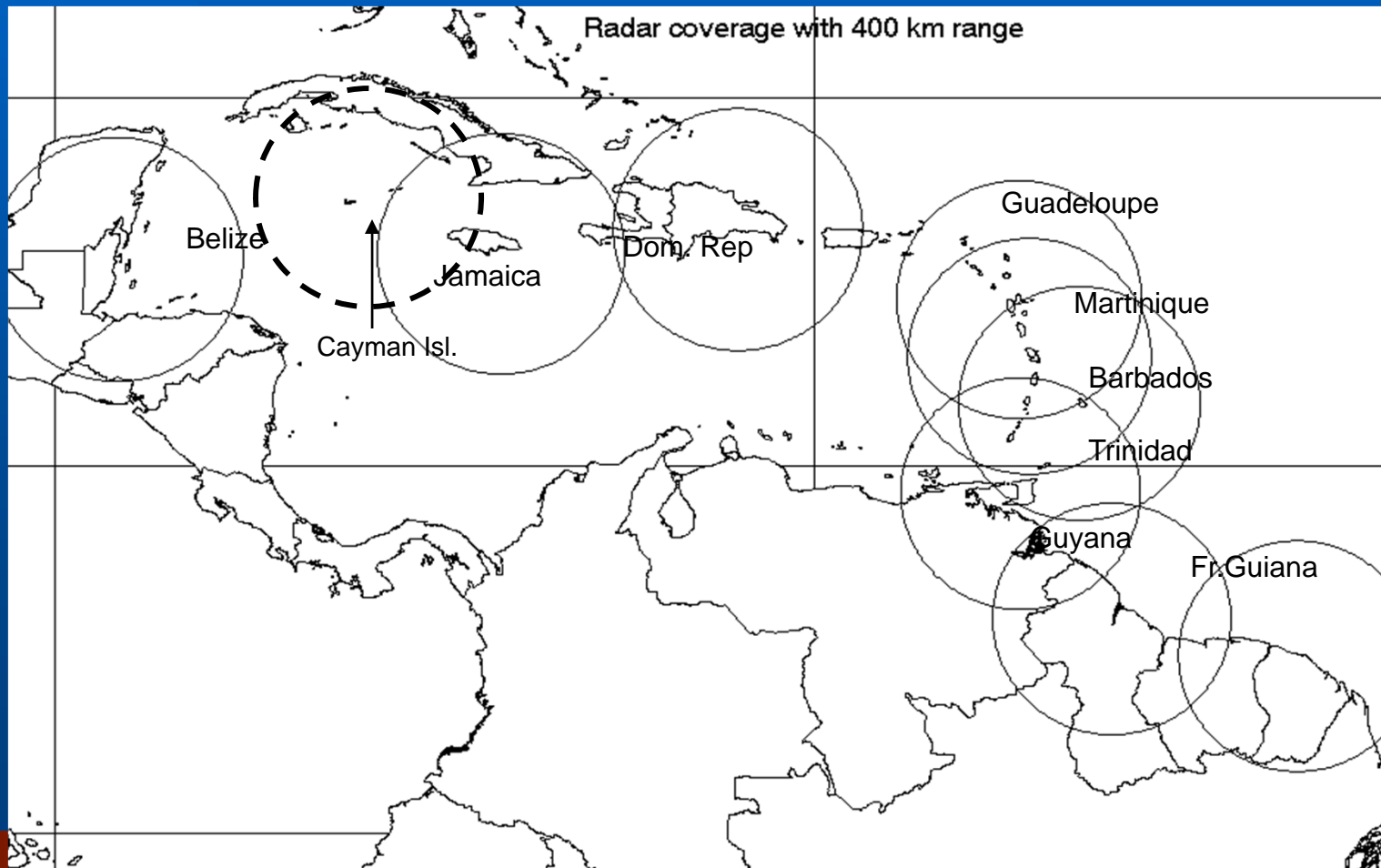


Pdf File: 50km_1km.cappi
Clutter Filter: Doppler Num 6
Time sampling:53
PRF: 1200 Hz / 800 Hz
Range: 50 km
Resolution: 0.200 km/pixel
Height: 1.000 km
Alg type: PCAPPI
CAPPI Range: 2 km to 75 km
Data: Radar Data
Rainbow® Gematronik



EXTENSION OF NETWORK

- Addition of Radar in the Cayman Islands





Thank You !

**Caribbean Meteorological
Organization (CMO)
Tel.: +1 868 622-4711
Fax.: +1 868 622-0277
E-mail: CMOHQ@cmo.org.tt
Webpage: <http://www.cmo.org.tt>**